

## National Drug Treatment Waiting Times Information Framework Report April - June 2007

The tables and charts present data on the number of clients seen by drug treatment services and the time they waited to be seen for various interventions. The reports only include those clients referred after the 1<sup>st</sup> of April 2004 and do not take account of the number of clients who were in, or waiting for, treatment before this date.

The tables are:

**Table 1 The length of time clients have waited for interventions:** clients are grouped into having waited less than 3 weeks or more than 3 weeks from referral to assessment; from care-plan to intervention, clients are classed as having waited less than 2 weeks or more than 2 weeks.

**Table 2** Similar to Table 1, showing **trends over the previous 12 months** for which data has been collected.

**Table 3** Details the number of **clients who were engaged with the service** for more than 12 weeks from referral to discharge.

**Table 4** shows the number of clients **who were retained in treatment** (start of treatment to discharge) for more than 12 weeks.

**Tables 3 and 4** provide an indication of client retention time within the system. Retention time from start of treatment to planned discharge is potentially a useful indicator of treatment outcome.

### Interpreting the Data

These tables are primarily intended to help ADATs monitor and manage performance in their own areas over a period of time. It is important to be aware that there are some data quality issues that may impact on analysis - caution is therefore recommended when interpreting the tables. In February 2007, ISD provided ADAT's with a revised data collection system. The revised system now allows ADAT's to produce a wider range of reports and also provides them with the facility to monitor data quality.

The number of services submitting data varies significantly from area to area and within areas across time (i.e. over data collection quarters). To address this, ADAT's are asked to encourage services to submit data. The substance misuse team continue to monitor the number of services submitting data and to provide additional training where necessary.

Key points to note when interpreting the April - June 2007 data are:

- There are no submissions from Orkney and Western Isles due to data quality issues.
- Missing submissions (i.e. Orkney and Western Isles) are represented as blank fields in the tables. Where no clients have been seen, or there are no clients waiting for a specified intervention, zeros have been used.
- Due to the reorganisation of Argyll & Clyde ADAT, ISD now receives data for (1) Argyll & Bute (2) Greater Glasgow & Clyde (excluding Glasgow City) and (3) Glasgow City. This publication presents data for each of these areas for April-June 07. Information for Argyll & Clyde and Greater Glasgow ADATs, which were previously published, are no longer received by ISD.
- Of those ADAT's who did return data for the time period, not all included data from all services within their area. These areas were: Aberdeenshire, Argyll & Bute, Borders, Dumfries & Galloway, Dundee City, East Lothian, Edinburgh City, Fife, Forth Valley, Glasgow City, Greater Glasgow & Clyde (excluding Glasgow City), Highland, Lanarkshire, Midlothian, Moray, West Lothian.

There is a wide range of demand for substance misuse services across Scotland, and to meet this demand, an equally variable set of practices across the country. In some ADAT areas, the impact of a single specialized service – for example, a crisis management centre – may dramatically alter the distribution of waiting times. Consequently, to compare data across ADATs is risky and potentially inappropriate.

### **Additional Information**

As ISD only receive aggregate data from each of the ADAT's, it is not possible for us to validate the data. Detailed questions regarding local data should be addressed to the relevant ADAT.

**Table 1: Waiting Times Summary: Time Waited for Interventions  
Apr - Jun 2007**

	Ready for treatment to...																									
	Referral to assessment <sup>1</sup>				Structured Preparatory & Motivational Intervention <sup>2</sup>				Prescribed Drug Treatment <sup>2</sup>				Community Support / Rehabilitation <sup>2</sup>				Residential Detox / Rehabilitation <sup>2</sup>									
	≤21 days <sup>3</sup>		>21 days <sup>4</sup>		≤14 days <sup>5</sup>		>14 days <sup>6</sup>		≤14 days <sup>5</sup>		>14 days <sup>6</sup>		≤14 days <sup>5</sup>		>14 days <sup>6</sup>		≤14 days <sup>5</sup>		>14 days <sup>6</sup>		Longest Wait					
n	%	n	%	n	%	n	%	n	%	n	%	n	%	n	%	n	%	n	%	n	%	Longest Wait				
<i>Drug Action Team</i>																										
Aberdeen City	82	9	821	87	52+ wks	3	20	12	80	52+ wks	35	49	34	48	52+ wks	40	82	7	14	52+ wks	0	0	0	0		
Aberdeenshire	79	30	150	58	52+ wks	7	35	13	65	52+ wks	37	76	11	22	52+ wks	9	45	11	55	52+ wks	5	19	21	81	52+ wks	
Angus	46	90	2	4	27-52 wks	22	88	3	12	15-21 days	4	100	0	0	<7 days	8	13	52	85	27-52 wks	0	0	0	0	0	
Argyll and Bute <sup>7</sup>	89	88	6	6	5-8 wks	14	58	9	38	13-26 wks	9	100	0	0	<7 days	47	96	2	4	13-26 wks	3	100	0	0	8-14 days	
Ayrshire and Arran	414	48	345	40	52+ wks	105	66	52	33	52+ wks	84	77	24	22	27-52 wks	110	76	30	21	52+ wks	5	83	1	17	15-21 days	
Borders	48	26	124	68	52+ wks	46	79	9	16	52+ wks	5	83	1	17	9-12 wks	4	57	2	29	52+ wks	3	17	14	78	13-26 wks	
Dumfries and Galloway	218	81	22	8	27-52 wks	26	63	13	32	13-26 wks	10	22	34	76	13-26 wks	89	84	13	12	9-12 wks	0	0	0	0	0	
Dundee City	200	58	99	29	52+ wks	55	85	8	12	27-52 wks	5	100	0	0	<7 days	39	75	12	23	13-26 wks	0	0	0	0	0	
East Lothian	96	70	32	23	52+ wks	36	92	2	5	52+ wks	17	77	2	9	5-8 wks	5	4	116	96	52+ wks	1	100	0	0	<7 days	
Edinburgh City	40	28	80	56	52+ wks	5	56	3	33	13-26 wks	1	100	0	0	<7 days	66	83	14	18	52+ wks	9	100	0	0	<7 days	
Fife	764	70	274	25	52+ wks	29	88	2	6	22-28 days	7	50	7	50	27-52 wks	171	80	40	19	13-26 wks	0	0	0	0	0	
Forth Valley	368	83	53	12	27-52 wks	260	94	1	0	5-8 wks	31	19	130	78	52+ wks	0	0	0	0	0	0	0	0	0	0	
Glasgow City <sup>7</sup>	1193	85	134	10	52+ wks	428	86	66	13	52+ wks	128	60	79	37	52+ wks	184	51	164	45	52+ wks	152	81	31	17	27-52 wks	
Greater Glasgow and Clyde <sup>7</sup>	719	72	182	18	52+ wks	156	65	71	30	52+ wks	79	59	51	38	52+ wks	171	70	63	26	52+ wks	4	44	4	44	27-52 wks	
Highland	83	72	23	20	27-52 wks	43	60	20	28	13-26 wks	11	42	15	58	13-26 wks	3	75	1	25	9-12 wks	0	0	0	0	0	
Lanarkshire	334	43	352	45	52+ wks	108	64	62	36	52+ wks	48	62	28	36	52+ wks	153	69	65	29	52+ wks	11	85	2	15	27-52 wks	
Midlothian	25	45	25	45	52+ wks	0	0	0	0	0	0	0	0	0	0	0	0	39	100	52+ wks	0	0	0	0	0	
Moray	23	30	46	61	52+ wks	13	93	1	7	22-28 days	17	68	6	24	5-8 wks	0	0	0	0	0	0	0	0	0	0	
Orkney																										
Perth and Kinross	12	8	122	82	52+ wks	4	50	3	38	52+ wks	1	25	3	75	27-52 wks	1	17	4	67	52+ wks	0	0	0	0	0	
Shetland	7	100	0	0	8-14 days	4	57	3	43	5-8 wks	0	0	8	73	27-52 wks	0	0	0	0	0	0	0	0	0	0	
West Lothian	108	30	224	63	52+ wks	10	91	1	9	15-21 days	23	30	49	64	52+ wks	18	12	130	83	52+ wks	0	0	0	0	0	
Western Isles																										
<b>Scotland</b>	<b>4948</b>	<b>57</b>	<b>3116</b>	<b>36</b>		<b>1374</b>	<b>77</b>	<b>354</b>	<b>20</b>		<b>552</b>	<b>52</b>	<b>482</b>	<b>45</b>		<b>1118</b>	<b>58</b>	<b>765</b>	<b>40</b>		<b>193</b>	<b>71</b>	<b>73</b>	<b>27</b>		

1 - Time between date referral received / first contact and the first appointment date offered for assessment for those assessed during the reporting period OR the time between date referral received / first contact and the end of the reporting period for those still waiting for assessment

2 - Time between date care plan is agreed / decision on treatment is made / date client ready for treatment and the first appointment date offered for an intervention for those receiving this intervention during the reporting period OR the time between date care plan is agreed / decision on treatment is made / date client ready for treatment and the end of the reporting period for those still waiting for an intervention.

3 - Includes the number of clients who received an assessment appointment within 21 days of referral

4 - Includes the number of clients who received an assessment appointment more than 21 days after referral AND the number of clients who are still waiting for an assessment appointment and have already waited more than 21 days

5 - Includes the number of clients who received a treatment appointment within 14 days of date care plan agreed / date decision on treatment made / date client ready for treatment

6 - Includes the number of clients who received a treatment appointment more than 14 days after treatment decision AND the number of clients who are still waiting for a treatment appointment and have already waited more than 14 days

7. Please note that following the reorganisation of Argyll & Clyde ADAT, as of April 2007 ISD receives separate data for Argyll & Bute, Greater Glasgow & Clyde (excluding Glasgow City) and Glasgow City.

The table presents data for 'Greater Glasgow & Clyde', this excludes data for Glasgow City.

Note: Clients who are still waiting for an appointment and have waited less than 21 days for an assessment appointment or less than 14 days for a treatment appointment are not included in these figures.



**Table 3: Waiting Times Summary - Referral to Discharge**  
Apr - Jun 2007

	Referral to Discharge for...																									
	Planned Discharges								Unplanned Discharges								Disciplinary Discharges									
	Jul-Sep06		Oct-Dec06		Jan-Mar07		Apr-Jun07		Jul-Sep06		Oct-Dec06		Jan-Mar07		Apr-Jun07		Jul-Sep06		Oct-Dec06		Jan-Mar07		Apr-Jun07			
	>12 wks	%	>12 wks	%	>12 wks	%	>12 wks	%	>12 wks	%	>12 wks	%	>12 wks	%	>12 wks	%	>12 wks	%	>12 wks	%	>12 wks	%	>12 wks	%		
<i>Drug Action Team</i>																										
Aberdeen City	25	83	49	79	18	69	38	72	21	75	36	88	30	73	41	80	0	0	0	0	0	0	0	0	5	100
Aberdeenshire	29	76	9	82	28	90	24	67	40	59	24	47	25	68	49	60	0	0	1	100	1	20	3	100		
Angus	1	5	0	0	1	5	3	17	0	0	0	0	0	0	0	0	0	0	0	0	0	0	0	0	0	0
Argyll and Clyde <sup>1</sup>	88	48	108	50	108	51			60	25	113	38	240	60			8	89	11	61	6	43				
Argyll and Bute <sup>1</sup>							29	73							31	67							2	100		
Ayrshire and Arran	99	40					118	54	108	46					47	27	7	29					12	41		
Borders	23	64	33	61	27	79	25	61	41	53	28	48	27	84	50	58	0	0	1	17	4	80	0	0		
Dumfries and Galloway	24	39	43	34	50	36	30	42	19	29	30	37	32	39	37	38	1	50	1	17	1	50	1	100		
Dundee City	21	43	21	50	16	46	21	34	25	49	15	33	8	18	8	11	0	0	0	0	1	100	0	0		
East Lothian	18	38	23	31	15	29	16	26	7	19	1	3	12	25	6	15	0	0	0	0	0	0	0	0	0	0
Edinburgh City	34	62	44	65	16	59	57	81	66	42	86	44	60	48	43	68	1	50	1	50	0	0	0	0		
Fife	178	56	259	63	270	57	233	47	63	26	180	57	157	46	53	22	0	0	0	0	3	100	1	50		
Forth Valley	9	14	0	0	0	0	31	25	0	0	0	0	0	0	27	11	0	0	0	0	0	0	0	0		
Glasgow <sup>1</sup>	109	51	127	41	171	45			170	36	143	33	253	54			8	44	13	42	3	30				
Glasgow City <sup>1</sup>							132	40							207	48							0	0		
Greater Glasgow and Clyde <sup>1</sup>							137	58							91	21							2	40		
Highland			17	57	22	76	4	18			19	41	8	33	10	36			3	75	3	100	1	100		
Lanarkshire	41	49	66	44	96	55	38	19	39	33	77	37	104	60	77	44	1	50	3	60	4	80	4	50		
Midlothian	0	0	2	40	2	67	0	0	0	0	2	3	6	20	0	0	0	0	0	0	0	0	0	0		
Moray	12	71	6	40	4	27	14	56	13	46	5	42	15	63	9	56	0	0	0	0	0	0	0	0		
Orkney	8	89	2	25					1	33	1	20					0	0	0	0						
Perth and Kinross					23	70	7	70					6	50	0	0					0	0	0	0		
Shetland	4	67	3	100	3	100	0	0	1	100	0	0	4	100	0	0	0	0	0	0	0	0	0	0		
West Lothian	43	69	45	68	34	68	39	68	20	14	31	13	28	18	21	14	16	94	12	92	10	77	20	91		
Western Isles	2	50	1	14	1	100			0	0	0	0	0	0			0	0	0	0	0	0				
<b>Scotland</b>	<b>768</b>	<b>50</b>	<b>858</b>	<b>50</b>	<b>905</b>	<b>50</b>	<b>996</b>	<b>46</b>	<b>694</b>	<b>35</b>	<b>791</b>	<b>37</b>	<b>1015</b>	<b>46</b>	<b>807</b>	<b>32</b>	<b>42</b>	<b>56</b>	<b>46</b>	<b>53</b>	<b>36</b>	<b>58</b>	<b>51</b>	<b>61</b>		

1. Please note that following the reorganisation of Argyll & Clyde ADAT, as of April 2007 ISD receives separate data for Argyll & Bute, Greater Glasgow & Clyde (excluding Glasgow City) and Glasgow City. The table presents data for 'Greater Glasgow & Clyde', this excludes data for Glasgow City. Data for Argyll & Clyde and Greater Glasgow ADATs are no longer received.  
2 - Number of clients who were discharged more than 12 weeks after their referral date and as a percentage of total discharges from referral to discharge.

Note: The number of services submitting data varies significantly from area to area and within areas across data collection periods. Caution is recommended when interpreting trend data.

Waiting Times Summary: Start of Treatment to Discharge

Start of Treatment to Discharge for...

	Planned Discharges															Unplanned Discharges															Disciplinary Discharges														
	Oct-Dec05		Jan-Mar06		Apr-Jun06		Jul-Sep06		Oct-Dec 06 <sup>1</sup>		Oct-Dec05		Jan-Mar06		Apr-Jun06		Jul-Sep06		Oct-Dec 06 <sup>1</sup>		Oct-Dec05		Jan-Mar06		Apr-Jun06		Jul-Sep06		Oct-Dec 06 <sup>1</sup>																
	>12 wks		>12 wks		>12 wks		>12 wks		>12 wks		>12 wks		>12 wks		>12 wks		>12 wks		>12 wks		>12 wks		>12 wks		>12 wks		>12 wks		>12 wks																
	n	%	n	%	n	%	n	%	n	%	n	%	n	%	n	%	n	%	n	%	n	%	n	%	n	%	n	%	n	%															
<i>Drug Action Team</i>																																													
Aberdeen City			0	0	32	94	16	73			0	0	14	88	13	87			0	0	1	50	0	0																					
Aberdeenshire	4	40	7	47	9	60	17	57	19	73	12	48	14	54	14	78	0	0	0	0	0	0	0	0																					
Angus	0	0	0	0	0	0	1	7	0	0	0	0	0	0	0	0	0	0	0	0	0	0	0	0																					
Argyll and Clyde	26	52	32	71	77	80	50	57	144	74	7	13	46	47	23	32	4	100	1	100	4	67	4	67																					
Ayrshire and Arran	14	42	12	38	8	24	38	46	60	65	7	30	37	54	40	52	2	22	0	0	0	0	6	50																					
Borders	17	71	32	58	12	57	16	53	43	67	11	31	8	42	13	43	0	0	2	50	1	100	0	0																					
Dumfries and Galloway	16	57	19	36	25	57	14	48	19	79	11	37	18	40	12	40	0	0	0	0	0	0	0	0																					
Dundee City	0	0	21	50	16	55	10	53	0	0	12	67	6	55	4	67	0	0	0	0	0	0	0	0																					
East Lothian	0	0	18	62	31	60	16	67	0	0	8	50	7	78	4	44	0	0	1	100	2	100	0	0																					
Edinburgh City	19	54	17	74	16	53	26	70	103	72	10	63	7	13	33	32	0	0	0	0	0	0	1	50																					
Fife	48	66	95	71	53	57	102	53	77	68	14	33	6	40	14	56	2	100	0	0	0	0	0	0																					
Forth Valley	0	0			9	82	8	73	0	0			0	0	0	0	0	0			0	0	0	0																					
Glasgow	65	46	65	57	149	75	81	60	264	77	75	51	113	52	90	42	2	14	7	50	11	41	7	41																					
Highland	13	54	26	76	4	27	35	58	31	56	10	34	0	0	1	50	0	0																											
Lanarkshire	25	42	104	74	94	59	28	39	63	77	26	41	21	38	16	42	2	50	1	100	1	50	1	50																					
Midlothian					0	0							0	0					0	0	0	0																							
Moray	9	50	5	42	24	77	6	75	51	85	2	17	17	61	11	69	0	0	0	0	0	0	0	0																					
Orkney	0	0	2	50	2	67	7	88	0	0	1	50	1	50	0	0	0	0	0	0	0	0	0	0																					
Perth and Kinross																																													
Shetland	1	50	2	67	0	0	4	67	0	0	0	0	0	0	1	100	0	0	0	0	0	0	0	0																					
West Lothian	23	51	51	69	32	62	28	54	56	70	27	41	8	18	6	18	5	100	5	83	12	80	13	76																					
Western Isles	0	0	0	0	0	0	0	0	0	0	0	0	0	0	0	0	0	0	0	0	0	0	0	0																					
<b>Scotland</b>	<b>280</b>	<b>51</b>	<b>508</b>	<b>63</b>	<b>593</b>	<b>63</b>	<b>468</b>	<b>54</b>	<b>934</b>	<b>73</b>	<b>254</b>	<b>42</b>	<b>333</b>	<b>45</b>	<b>294</b>	<b>43</b>	<b>17</b>	<b>27</b>	<b>18</b>	<b>53</b>	<b>32</b>	<b>53</b>	<b>32</b>	<b>56</b>																					

1. Data on Start of treatment to Discharge was no longer collected centrally from October 2006.

2. Number of clients who were discharged more than 12 weeks after their initial treatment date and as a percentage of total discharges from treatment to discharge.

Note: The number of services submitting data varies significantly from area to area and within areas across data collection periods. Caution is recommended when interpreting trend data.

### Waiting Times Summary: Percentage of clients receiving an assessment appointment within 21 days of referral

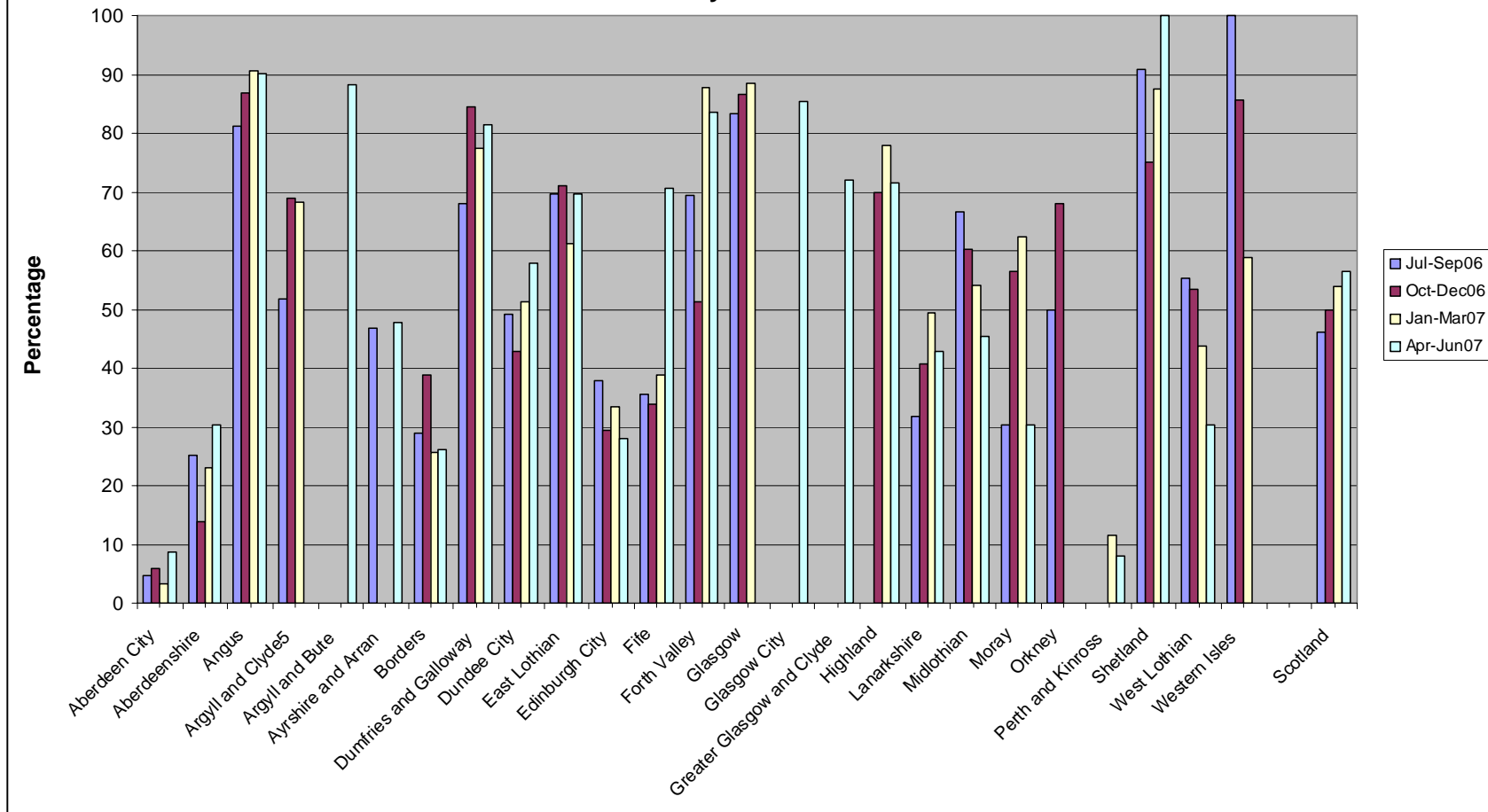
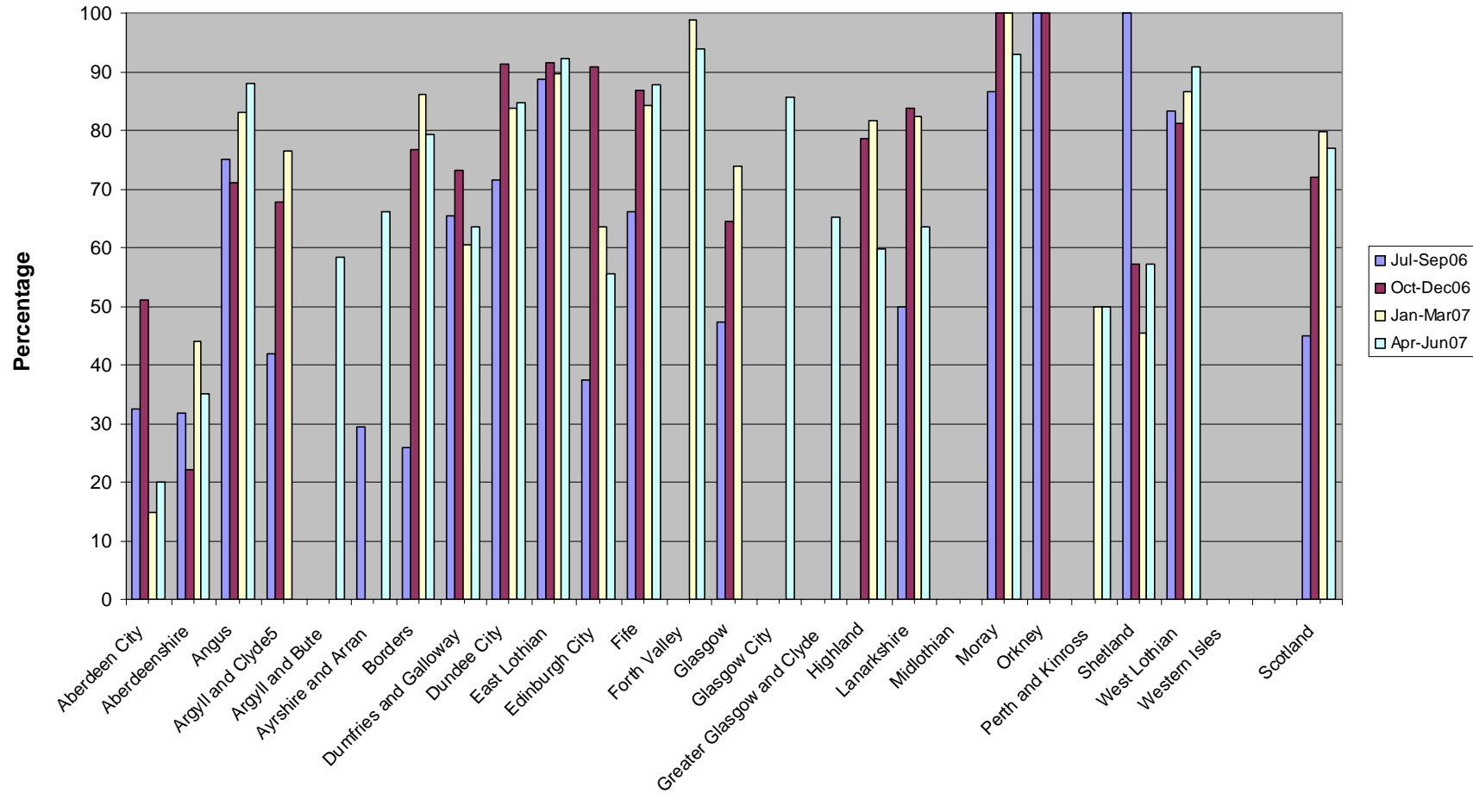


Table 1

**Waiting Times Summary: Percentage of clients who receive structured preparatory and motivational interventions within 14 days of treatment decision (care plan)**





**Waiting Times Summary: Percentage of clients who receive community support and/or rehabilitation within 14 days of treatment decision (care plan)**

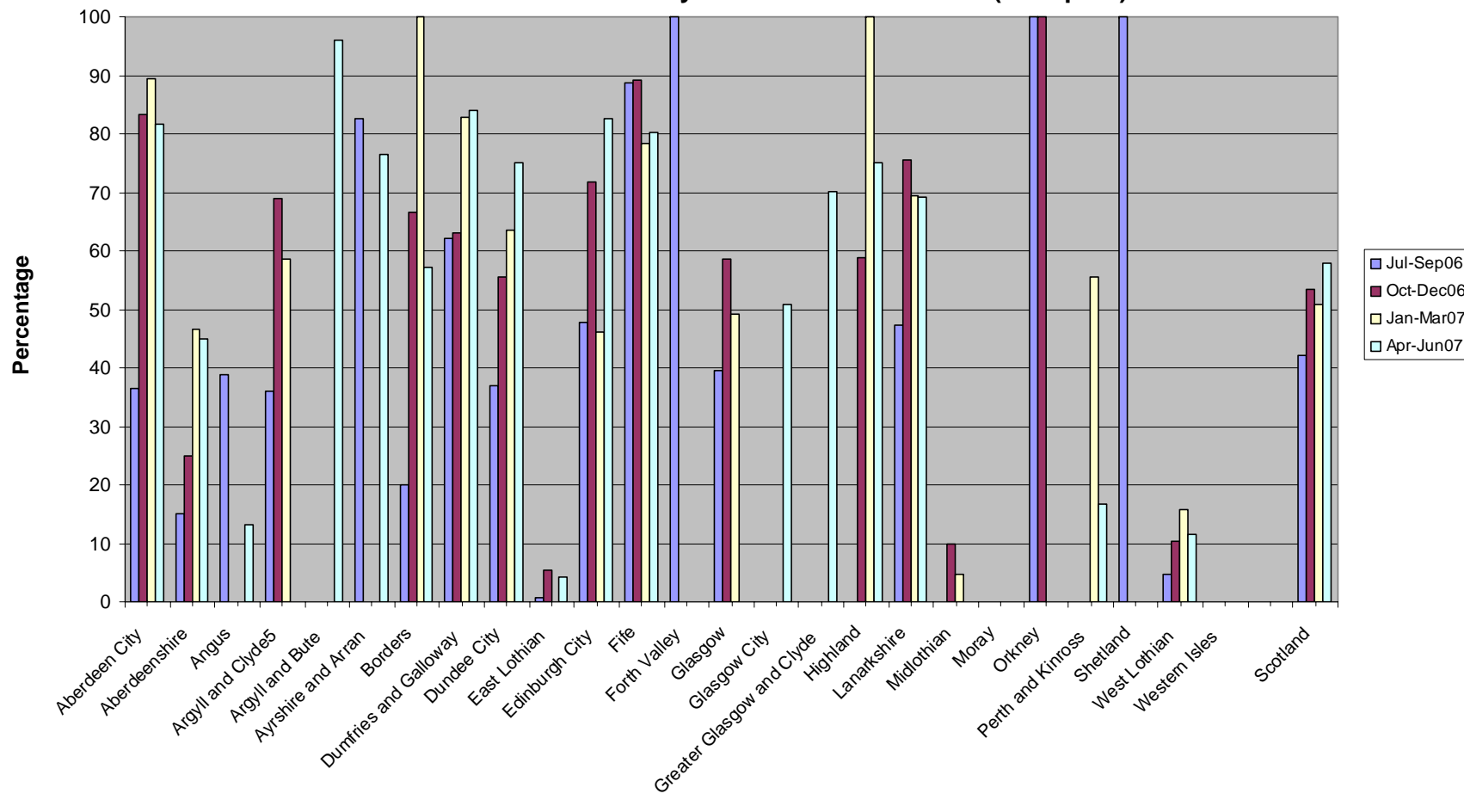


Table 2: trend data