

National Drug Treatment Waiting Times Information Framework Report July – September 2006

The tables and charts present data on the number of clients seen by drug treatment services and the time they waited to be seen for various interventions. The reports only include those clients referred after the 1st of April 2004 and do not take account of the number of clients who were in, or waiting for, treatment before this date.

The tables are:

Table 1 The length of time clients have waited for interventions: clients are grouped into having waited less than 3 weeks or more than 3 weeks from referral to assessment; from care-plan to intervention, clients are classed as having waited less than 2 weeks or more than 2 weeks.

Table 2 Similar to Table 1, showing **trends over the previous 12 months** for which data has been collected.

Table 3 details the number of **clients who were engaged with the service** for more than 12 weeks from referral to discharge.

Table 4 shows the number of clients **who were retained in treatment** (start of treatment to discharge) for more than 12 weeks.

Tables 3 and 4 provide an indication of client retention time within the system. Retention time from start of treatment to planned discharge is potentially a useful indicator of treatment outcome.

Interpreting the Data

It is important to be aware that there are some data quality issues that may impact on analysis - caution is therefore recommended when interpreting the tables.

The number of services submitting data varies significantly from area to area. To address this, ADAT's are asked to encourage services to submit data. The substance misuse team continues to monitor the number of services submitting data and to provide additional training where necessary.

Key points to note when interpreting the July - September 2006 data are:

- There are no submissions from Perth and Kinross DAAT due to technical difficulties.
- In addition, there are no July – September 2006 submissions from Highlands due to staff shortages.
- Missing submissions (i.e. Perth & Kinross, Highlands) are represented as blank fields in the tables. Where no clients have been seen, or there are no clients waiting for a specified intervention, zeros have been used.
- There is still some under recording of treatment codes for those clients who are waiting for interventions. The audit of the data collected so far reveals the extent of the problem and DAATs are actively working to fix this.

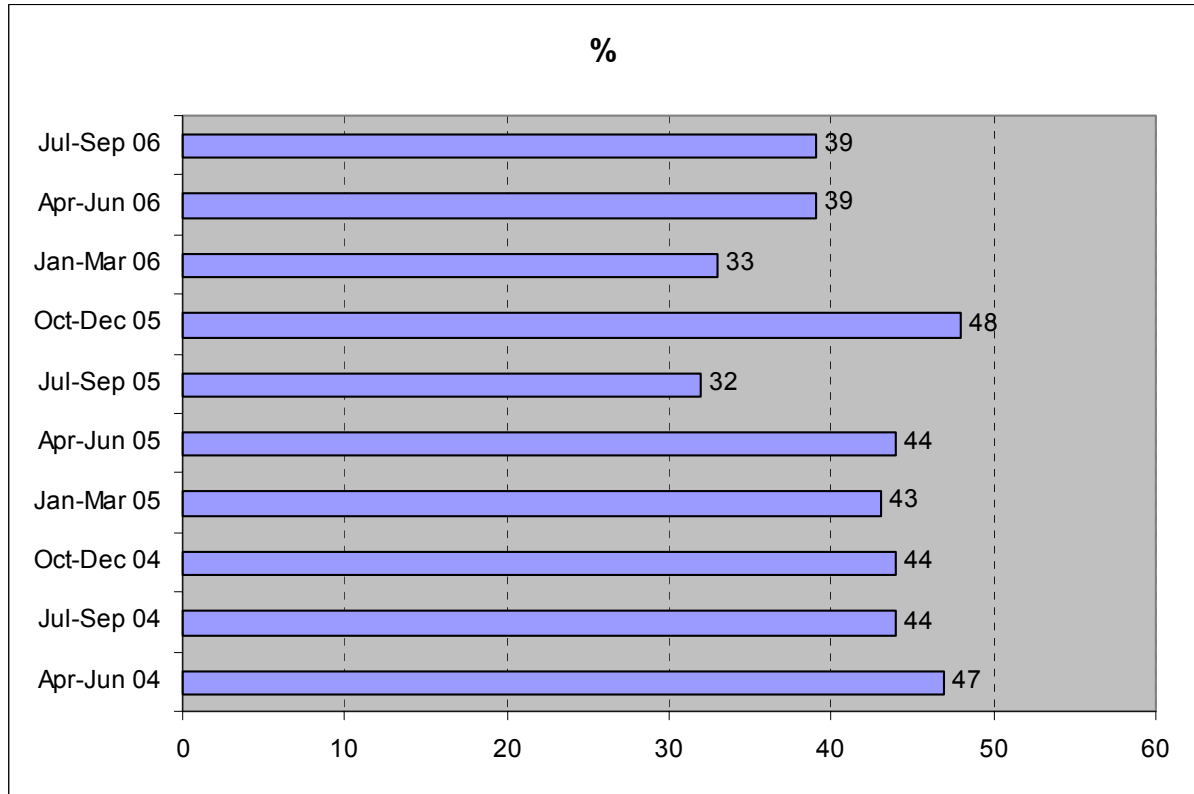
There is a wide range of demand for substance misuse services across Scotland, and to meet this demand, an equally variable set of practices across the country. In some ADAT areas, the impact of a single specialized service – for example, a crisis management centre – may dramatically alter the distribution of waiting times. Consequently, to compare data across ADATs is risky and potentially inappropriate. These tables are intended to help ADATs monitor and manage performance in their own areas over a period of time.

Residential Rehabilitation and Detoxification

Residential rehabilitation and detoxification services are available in a limited number of ADAT areas. These services provide treatment interventions to clients from across Scotland and as

such it is inappropriate to compare their performance at ADAT level. Figure 1 gives details of waiting times for residential rehabilitation and detoxification at Scotland level: the proportion of clients receiving residential interventions within 14 days of their care plan being agreed.

Figure 1: Waiting Times Summary (Scotland): Percentage of clients who receive residential rehabilitation and/or detoxification within 14 days of treatment decision (care plan)



Finally, it is important to remember that data collection only began in April 2004. Data were not collected for clients who were already in the system at that time. As time passes, the picture being presented becomes progressively more meaningful, as we capture information on more of the clients who attend substance misuse services.

Additional Information

As ISD only receive aggregate data from each of the ADAT's, it is not possible for us to validate the data. If you have any more detailed questions regarding the data please contact the ADAT directly.

**Table 1: Waiting Times Summary: Time Waited for Interventions
Jul - Sep 2006**

	Ready for treatment to...																								
	Referral to assessment ¹				Structured Preparatory & Motivational Intervention ²				Prescribed Drug Treatment ²				Community Support / Rehabilitation ²				Residential Detox / Rehabilitation ²								
	<=21 days ³		>21 days ⁴		Longest Wait		<=14 days ⁵		>14 days ⁶		Longest Wait		<=14 days ⁵		>14 days ⁶		Longest Wait		<=14 days ⁵		>14 days ⁶		Longest Wait		
	n	%	n	%		n	%	n	%	n	%	n	%	n	%	n	%	n	%	n	%	n	%		
<i>Drug Action Team</i>																									
Aberdeen City	40	5	772	91	52+ wks	14	33	29	67	52+ wks	10	15	55	83	52+ wks	15	37	26	63	52+ wks	4	44	5	56	52+ wks
Aberdeenshire	75	25	195	66	52+ wks	28	32	59	67	52+ wks	31	76	8	20	52+ wks	3	15	17	85	52+ wks	4	20	16	80	52+ wks
Angus	39	81	3	6	22-28 days	27	75	3	8	15-21 days	0	0	0	0		7	39	9	50	52+ wks	0	0	0	0	
Argyll and Clyde	459	52	338	38	52+ wks	110	42	149	46	52+ wks	33	13	224	86	52+ wks	99	36	164	60	52+ wks	5	19	22	81	52+ wks
Ayrshire and Arran	411	47	394	45	52+ wks	77	30	178	68	52+ wks	41	68	17	28	52+ wks	80	82	16	16	52+ wks	8	73	3	27	5-8 wks
Borders	69	29	157	66	52+ wks	28	26	75	69	52+ wks	2	67	1	33	27-52 wks	3	20	12	80	52+ wks	25	25	74	75	52+ wks
Dumfries and Galloway	155	68	43	19	52+ wks	17	65	9	35	13-26 wks	5	11	37	80	52+ wks	36	62	21	36	13-26 wks	0	0	0	0	
Dundee City	79	49	75	47	27-52 wks	15	71	6	29	52+ wks	7	100	0	0	<7 days	14	37	22	58	52+ wks	0	0	0	0	
East Lothian	71	70	22	22	52+ wks	39	89	5	11	52+ wks	21	91	2	9	52+ wks	1	1	121	98	52+ wks	0	0	0	0	
Edinburgh City	137	38	206	57	52+ wks	33	38	55	63	52+ wks	1	33	2	67	52+ wks	41	48	44	51	52+ wks	13	93	1	7	52+ wks
Fife	420	36	716	61	52+ wks	45	66	22	32	52+ wks	21	68	10	32	52+ wks	189	89	21	10	52+ wks	0	0	0	0	
Forth Valley	111	69	23	14	5-8 wks	0	0	2	100	27-52 wks	4	2	164	95	52+ wks	6	100	0	0	<7 days	0	0	0	0	
Glasgow	1040	83	113	9	52+ wks	235	47	248	50	52+ wks	125	43	164	56	52+ wks	157	39	224	56	52+ wks	88	46	97	51	52+ wks
Highland																									
Lanarkshire	143	32	272	60	52+ wks	65	50	65	50	52+ wks	12	44	15	56	52+ wks	54	47	55	48	52+ wks	0	0	1	100	9-12 wks
Midlothian	8	67	4	33	13-26 wks	0	0	0	0		0	0	0	0		0	0	18	100	13-26 wks	0	0	0	0	
Moray	24	30	41	52	52+ wks	13	87	2	13	52+ wks	7	64	3	27	22-28 days	0	0	1	100	52+ wks	0	0	1	100	52+ wks
Orkney	5	50	2	20	5-8 wks	4	100	0	0	<7 days	0	0	0	0		4	100	0	0	<7 days	0	0	0	0	
Perth and Kinross																									
Shetland	10	91	0	0	<7 days	10	100	0	0	8-14 days	10	100	0	0	<7 days	2	100	0	0	<7 days	0	0	0	0	
West Lothian	161	55	116	40	52+ wks	20	83	2	8	22-28 days	37	46	36	45	52+ wks	8	5	144	85	52+ wks	0	0	0	0	
Western Isles	6	100	0	0	15-21 days	0	0	0	0		0	0	0	0		0	0	7	100	13-26 wks	0	0	0	0	
Scotland	3463	46	3492	47		780	45	909	53		367	32	738	65		719	42	922	54		147	39	220	59	

1 - Time between date referral received / first contact and the first appointment date offered for assessment for those assessed during the reporting period OR the time between date referral received / first contact and the end of the reporting period for those still waiting for assessment.

2 - Time between date care plan is agreed / decision on treatment is made / date client ready for treatment and the first appointment date offered for an intervention for those receiving this intervention during the reporting period OR the time between date care plan is agreed / decision on treatment is made / date client ready for treatment and the end of the reporting period for those still waiting for an intervention.

3 - Includes the number of clients who received an assessment appointment within 21 days of referral

4 - Includes the number of clients who received an assessment appointment more than 21 days after referral AND the number of clients who are still waiting for an assessment appointment and have already waited more than 21 days

5 - Includes the number of clients who received a treatment appointment within 14 days of date care plan agreed / date decision on treatment made / date client ready for treatment

6 - Includes the number of clients who received a treatment appointment more than 14 days after treatment decision AND the number of clients who are still waiting for a treatment appointment and have already waited more than 14 days

Note: Clients who are still waiting for an appointment and have waited less than 21 days for an assessment appointment or less than 14 days for a treatment appointment are not included in these figures.

**Table 3: Waiting Times Summary - Referral to Discharge
Jul-Sep 2006**

	Referral to Discharge for...																										
	Planned Discharges								Unplanned Discharges								Disciplinary Discharges										
	Oct-Dec05		Jan-Mar06		Apr-Jun06		Jul-Sep06		Oct-Dec05		Jan-Mar06		Apr-Jun06		Jul-Sep06		Oct-Dec05		Jan-Mar06		Apr-Jun06		Jul-Sep06				
	>12 wks		>12 wks		>12 wks		>12 wks		>12 wks		>12 wks		>12 wks		>12 wks		>12 wks		>12 wks		>12 wks		>12 wks				
n		%		n		%		n		%		n		%		n		%		n		%		n		%	
<i>Drug Action Team</i>																											
Aberdeen City			39	80	37	97	25	83			46	64	33	97	21	75			1	100	2	100	0	0			
Aberdeenshire	11	92	16	59	14	64	29	76	16	47	46	70	48	63	40	59	1	50	0	0	0	0	0	0	0	0	
Angus	0	0	0	0	0	0	1	5	0	0	0	0	0	0	0	0	0	0	0	0	0	0	0	0	0	0	
Argyll and Clyde	64	45	79	46	102	55	88	48	116	38	81	38	96	36	60	25	5	63	1	33	4	50	8	89			
Ayrshire and Arran	24	21	78	43	56	29	99	40	31	19	26	20	85	40	108	46	4	19	2	15	1	5	7	29			
Borders	20	67	44	59	17	63	23	64	30	52	44	48	26	62	41	53	6	67	2	50	1	100	0	0			
Dumfries and Galloway	29	45	32	28	30	43	24	39	51	52	32	29	34	19	19	29	0	0	0	0	0	0	1	50			
Dundee City	13	22	32	41	20	41	21	43	29	24	22	31	17	43	25	49	0	0	0	0	0	0	0	0			
East Lothian	0	0	27	41	39	54	18	38	0	0	21	35	11	35	7	19	0	0	1	100	2	100	0	0			
Edinburgh City	76	48	26	60	22	69	34	62	113	48	29	53	29	39	66	42	0	0	1	100	0	0	1	50			
Fife	126	68	239	74	157	63	178	56	205	49	196	42	135	41	63	26	2	100	0	0	0	0	0	0			
Forth Valley	2	4			11	28	9	14	2	67			1	100	0	0	0	0			0	0	0	0			
Glasgow	89	44	88	48	200	67	109	51	209	43	123	38	250	46	170	36	3	19	8	47	12	44	8	44			
Highland	23	52	30	67	11	44			18	34	41	58	18	44			1	100	1	50	0	0					
Lanarkshire	43	45	118	67	106	59	41	49	55	38	63	35	52	36	39	33	7	88	1	100	1	33	1	50			
Midlothian							0	0							0	0							0	0			
Moray	14	52	10	48	37	69	12	71	29	63	19	61	19	45	13	46	0	0	0	0	0	0	0	0			
Orkney	0	0	2	50	2	50	8	89	0	0	1	33	2	50	1	33	0	0	0	0	0	0	0	0			
Perth and Kinross																											
Shetland	1	50	2	67	0	0	4	67	0	0	0	0	0	0	1	100	0	0	0	0	0	0	0	0			
West Lothian	51	73	82	80	49	72	43	69	50	32	63	31	26	13	20	14	13	100	6	100	17	100	16	94			
Western Isles	0	0	0	0	0	0	2	50	0	0	0	0	0	0	0	0	0	0	0	0	0	0	0	0			
Scotland	586	47	944	56	910	56	768	50	954	41	853	39	882	39	694	35	42	43	24	46	40	48	42	56			

Note: Number of clients who were discharged more than 12 weeks after their referral date and as a percentage of total discharges from referral to discharge.

Waiting Times Summary: Percentage of clients receiving an assessment appointment within 21 days of referral.

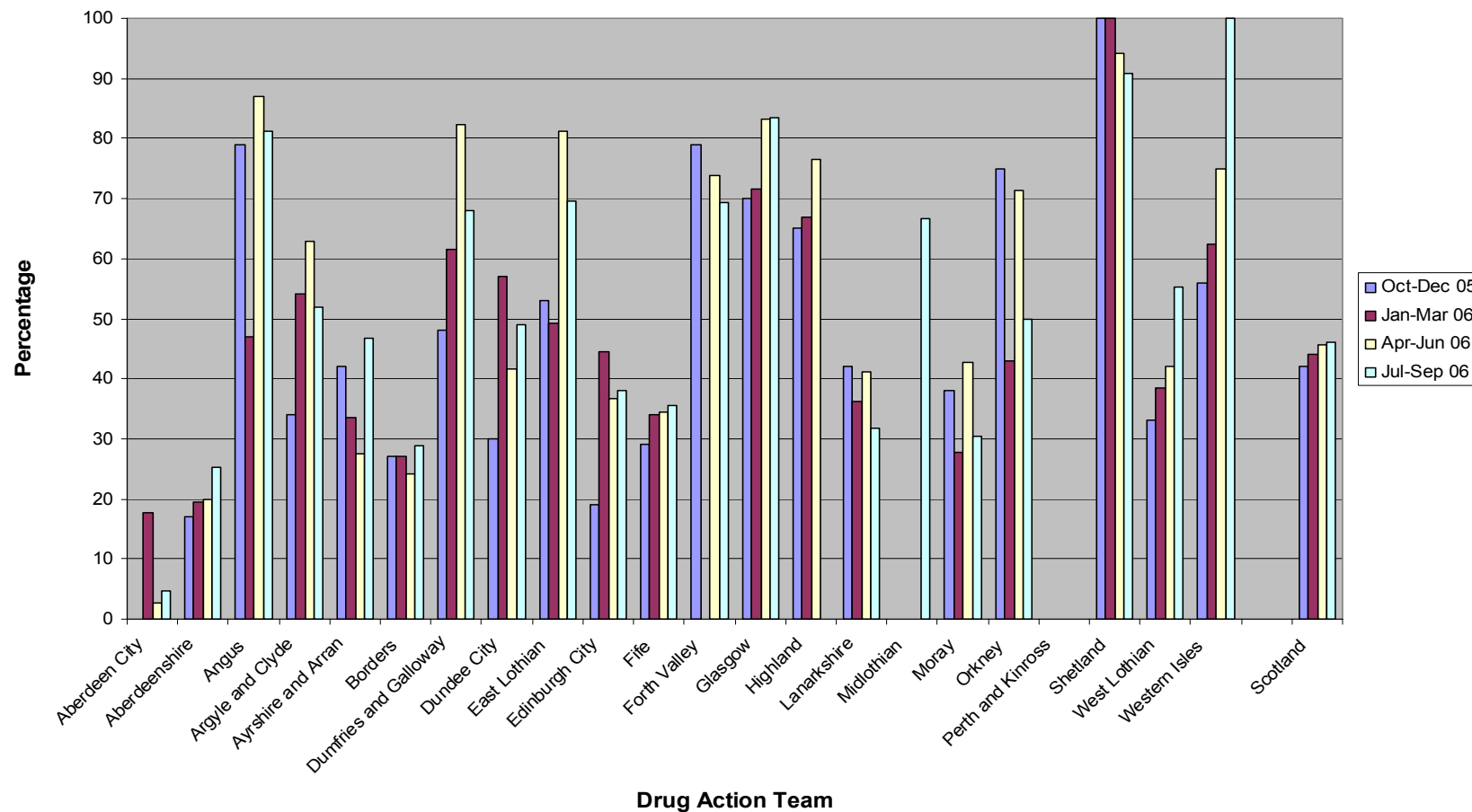
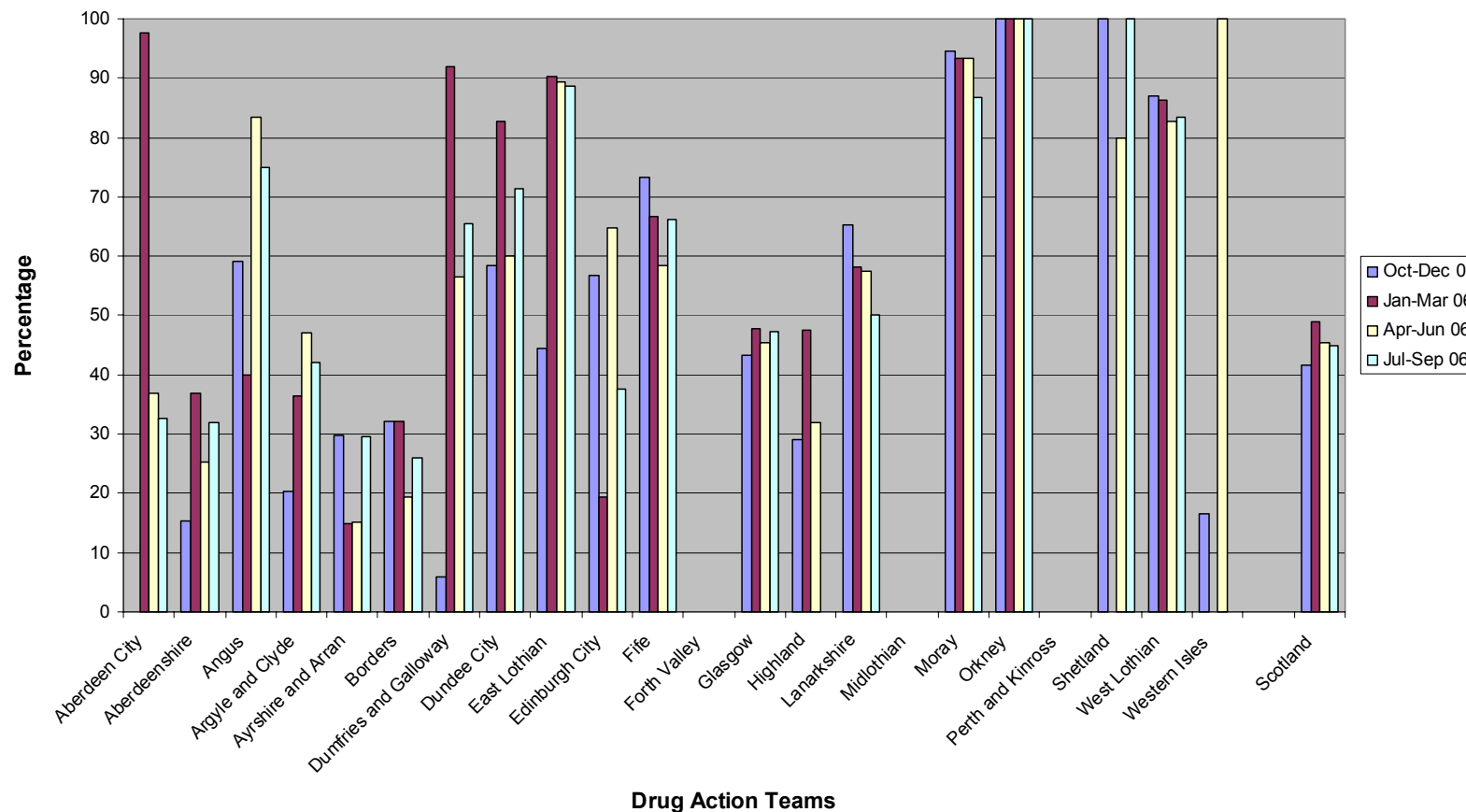


Table 1

Waiting Times Summary: Percentage of clients who receive structured preparatory and motivational interventions within 14 days of treatment decision (care plan)



Waiting Times Summary: Percentage of clients who receive prescribed drug treatment within 14 days of treatment decision (care plan)

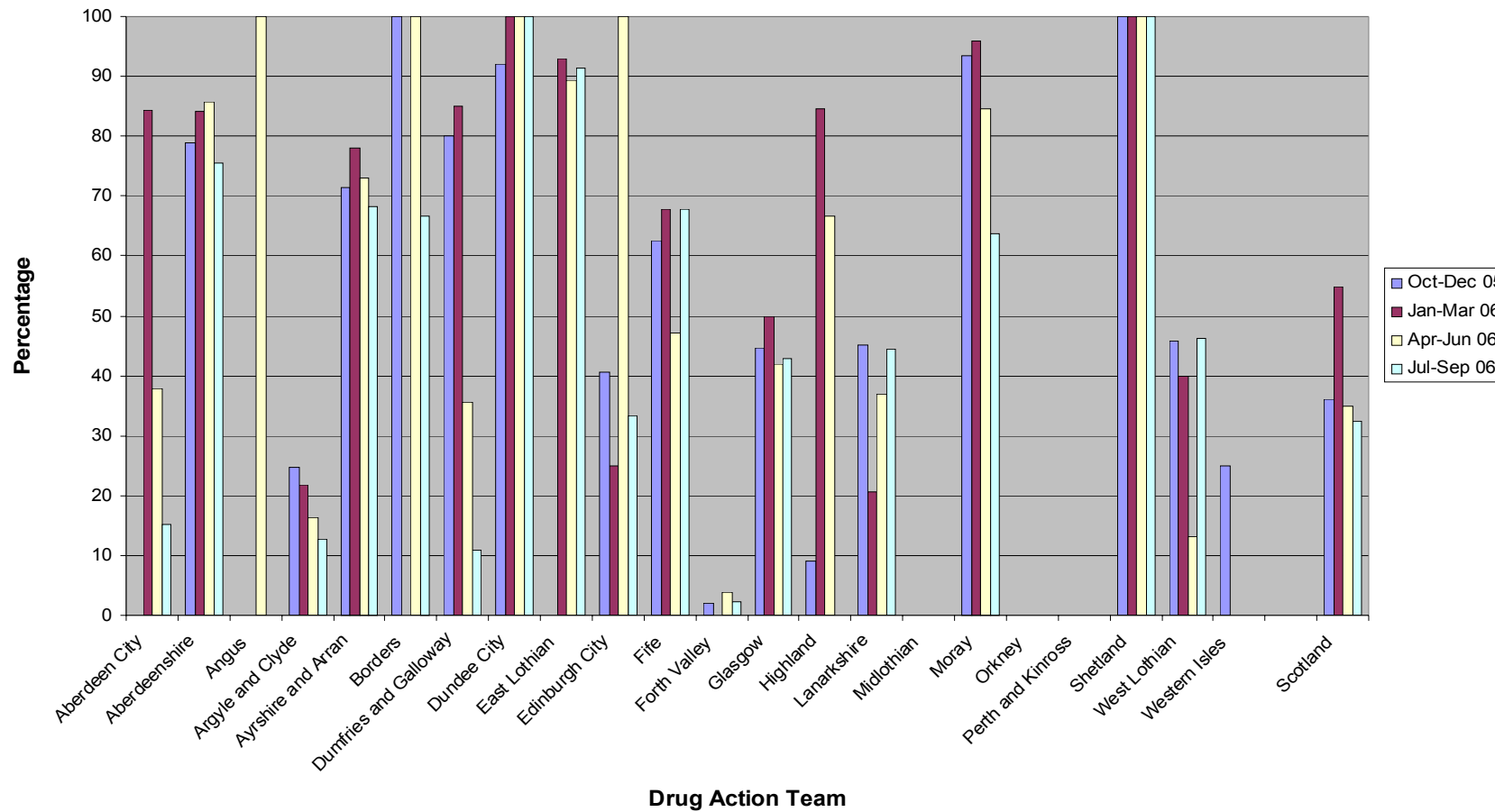


Table 2: trend data

Waiting Times Summary: Percentage of clients who receive community support and/or rehabilitation within 14 days of treatment decision (care plan)

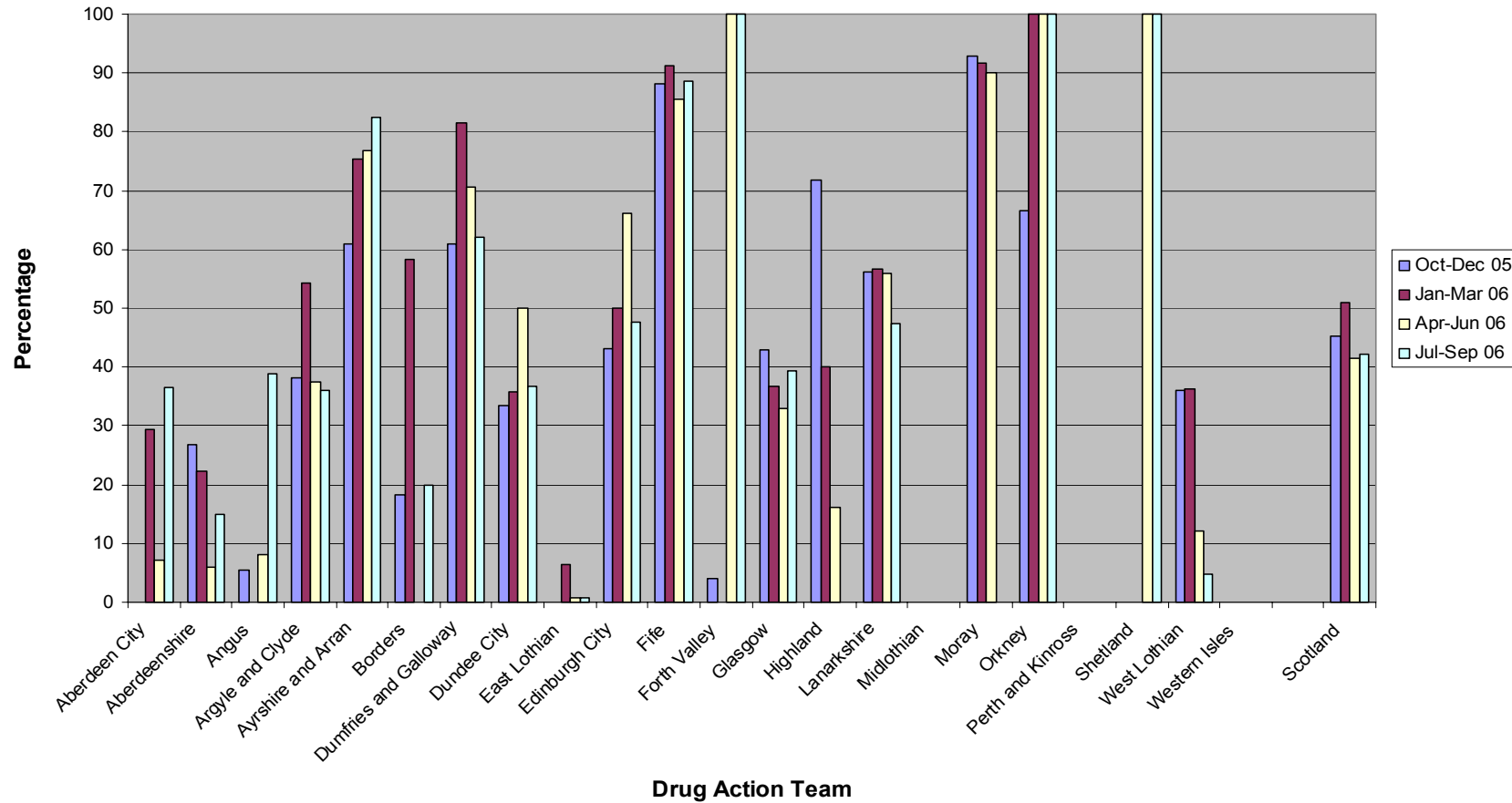


Table 2: trend data