

National Waiting Times Information Framework Report April - June 2005

These tables and charts that present data on the number of clients seen by drug treatment services and the time they waited to be seen for various interventions. The reports only include those clients referred after the 1st of April 2004 and do not take account of the number of clients who were in, or waiting for, treatment before this date.

The tables are:

Table (1) The length of time clients have waited for interventions: clients are grouped into having waited less than 3 weeks or more than 3 weeks from referral to assessment; from care-plan to intervention, clients are classed as having waited less than 2 weeks or more than 2 weeks.

Table (2) A similar table showing **trends over the 5 quarters** for which data has been collected.

Table (3) details the number of **clients who were engaged with the service** for more than 12 weeks from referral to discharge.

Table (4) shows the number of clients **who were retained in treatment** (start of treatment to discharge) for more than 12 weeks.

Tables 3 and 4 provide an indication of client retention time within the system. Retention time from start of treatment to planned discharge is potentially a useful indicator of treatment outcome.

Interpreting the Data

The substance misuse team has completed an in-depth data quality audit of all data submitted by DAATs to ISD since the Waiting Times Framework was implemented. Several data quality problems have been identified, and the team is now working with DAATs to resolve these issues. However, data presented here is high-level and aggregate, so should not be too affected by the quality issues.

The number of services submitting data varies significantly from area to area. To address this, DAATs are asked to encourage services to submit data. The substance misuse team continues to monitor the number of services submitting data and to provide additional training where necessary.

Key points to note when interpreting the April – June 2005 data are:

- There have been no submissions from Midlothian DAAT since data collection began due to technical difficulties.
- In addition, there are no April – June 2005 submissions from
 - Edinburgh City: staff absence. Submissions due in the next week
 - Highland: is trying to resolve data quality problems uncovered by the ISD audit. The substance misuse team is working with Highland DAAT to resolve these. Will submit two quarter's worth of information for the next quarter.
 - Western Isles: data delayed due to staffing issues. The data arrived too late for incorporation into the report, but will be included in the next quarter.

The reports will be updated as information becomes available.

- Missing submissions are represented as blank fields in the tables. Where no clients have been seen, or there are no clients waiting for a specified intervention, zeros have been used.

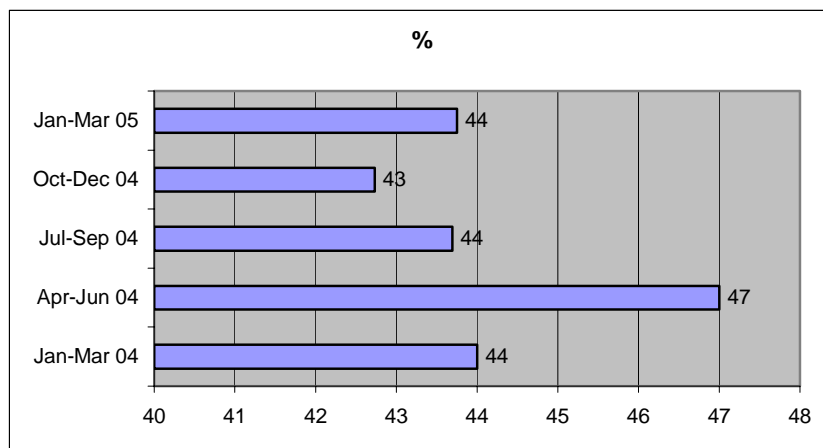
- There is still some under recording of treatment codes for those clients who are waiting for interventions. The audit of the data collected so far reveals the extent of the problem and DAATs are actively working to fix this.

There is a wide range of demand for substance misuse services across Scotland, and to meet this demand, an equally variable set of practices across the country. In some DAAT areas, the impact of a single specialized service – for example, a crisis management centre – may dramatically alter the distribution of waiting times. Consequently, to compare data across DAATs is risky and potentially inappropriate. These tables are intended to help DAATs monitor and manage performance in their own areas over a period of time.

Residential Rehabilitation and Detoxification

Residential rehabilitation and detoxification services are available in a limited number of DAAT areas. These services provide treatment interventions to clients from across Scotland and as such it is inappropriate to compare their performance at DAAT level. Figure 1 gives details of waiting times for residential rehabilitation and detoxification at Scotland level: the proportion of clients receiving residential interventions within 14 days of their care plan being agreed has remained stable over five quarters.

Figure 1: Waiting Times Summary (Scotland): Percentage of clients who receive residential rehabilitation and/or detoxification within 14 days of treatment decision (care plan)



Finally, it is important to remember that data collection only began in April 2004. Data were not collected for clients who were already in the system at that time. As time passes, the picture being presented becomes progressively more meaningful, as we capture information on more of the clients who attend substance misuse services.

Waiting Times Summary: Time Waited for Interventions
April - June 2005

| | Ready for treatment to... | | | | | | | | | | | | | | | | | | | | | | | | |
|-------------------------|-------------------------------------|-----------|------------------------|-----------|---|------------|------------------------|------------|--|------------|------------------------|-----------|---|-----------|------------------------|------------|---|------------|------------------------|-----------|------------|-----------|------------|-----------|-----------|
| | Referral to assessment ¹ | | | | Structured Preparatory & Motivational Intervention ² | | | | Prescribed Drug Treatment ² | | | | Community Support / Rehabilitation ² | | | | Residential Detox / Rehabilitation ² | | | | | | | | |
| | <=21 days ³ | | >=21 days ³ | | <=14 days ⁵ | | >=14 days ⁵ | | <=14 days ⁵ | | >=14 days ⁵ | | <=14 days ⁵ | | >=14 days ⁵ | | <=14 days ⁵ | | >=14 days ⁵ | | | | | | |
| n | % | n | % | n | % | n | % | n | % | n | % | n | % | n | % | n | % | n | % | n | % | | | | |
| <i>Drug Action Team</i> | | | | | | | | | | | | | | | | | | | | | | | | | |
| Aberdeen City | 33 | 6 | 442 | 87 | 52+ wks | 19 | 79 | 5 | 21 | 52+ wks | 10 | 36 | 17 | 61 | 52+ wks | 5 | 31 | 11 | 69 | 27-52 wks | 0 | 0 | 0 | 0 | |
| Aberdeenshire | 58 | 28 | 125 | 60 | 52+ wks | 11 | 41 | 12 | 44 | 52+ wks | 17 | 89 | 2 | 11 | 13-26 wks | 3 | 30 | 7 | 70 | 27-52 wks | 8 | 36 | 12 | 55 | 52+ wks |
| Angus | 24 | 18 | 92 | 69 | 27-52 wks | 16 | 53 | 6 | 20 | 9-12 wks | 0 | 0 | 0 | 0 | | 3 | 20 | 12 | 80 | 52+ wks | 0 | 0 | 0 | 0 | |
| Argyll and Clyde | 342 | 66 | 127 | 24 | 52+ wks | 34 | 33 | 66 | 65 | 52+ wks | 42 | 48 | 36 | 41 | 27-52 wks | 88 | 52 | 80 | 47 | 52+ wks | 0 | 0 | 15 | 100 | 52+ wks |
| Ayrshire and Arran | 102 | 22 | 338 | 73 | 52+ wks | 5 | 16 | 26 | 84 | 52+ wks | 21 | 48 | 23 | 52 | 52+ wks | 6 | 33 | 12 | 67 | 52+ wks | 1 | 100 | 0 | 0 | <7 days |
| Borders | 114 | 36 | 170 | 53 | 52+ wks | 20 | 32 | 38 | 61 | 52+ wks | 0 | 0 | 0 | 0 | | 9 | 64 | 5 | 36 | 27-52 wks | 46 | 58 | 33 | 41 | 52+ wks |
| Dumfries and Galloway | 147 | 49 | 131 | 44 | 13-26wks | 15 | 35 | 27 | 63 | 52+ wks | 14 | 41 | 16 | 47 | 27-52 wks | 41 | 59 | 26 | 38 | 52+ wks | 0 | 0 | 0 | 0 | 52+ wks |
| Dumfries City | 69 | 20 | 230 | 68 | 52+ wks | 7 | 23 | 23 | 74 | 52+ wks | 13 | 93 | 1 | 7 | 27-52 wks | 4 | 80 | 1 | 20 | 27-52 wks | 0 | 0 | 1 | 100 | 52+ wks |
| East Lothian | 105 | 64 | 49 | 30 | 52+ wks | 32 | 82 | 7 | 18 | 52+ wks | 18 | 86 | 3 | 14 | 52+ wks | 16 | 14 | 92 | 81 | 52+ wks | 0 | 0 | 0 | 0 | |
| Edinburgh City | | | | | | | | | | | | | | | | | | | | | | | | | |
| Fife | 488 | 26 | 1251 | 66 | 52+ wks | 71 | 68 | 31 | 30 | 52+ wks | 30 | 57 | 19 | 36 | 52+ wks | 197 | 84 | 32 | 14 | 52+ wks | 0 | 0 | 0 | 0 | |
| Forth Valley | 197 | 78 | 39 | 15 | 52+ wks | 94 | 100 | 0 | 0 | <7 days | 22 | 13 | 134 | 82 | 52+ wks | 3 | 10 | 27 | 90 | 52+ wks | 0 | 0 | 0 | 0 | |
| Glasgow | 1238 | 73 | 392 | 23 | 52+ wks | 245 | 55 | 182 | 41 | 52+ wks | 99 | 54 | 80 | 43 | 52+ wks | 126 | 40 | 173 | 55 | 52+ wks | 120 | 43 | 156 | 56 | 52+ wks |
| Highland | | | | | | | | | | | | | | | | | | | | | | | | | |
| Lanarkshire | 222 | 20 | 853 | 76 | 52+ wks | 74 | 64 | 37 | 32 | 52+ wks | 15 | 27 | 40 | 73 | 9-12 wks | 18 | 32 | 39 | 68 | 13-26 wks | 0 | 0 | 1 | 100 | 13-26 wks |
| Midlothian | | | | | | | | | | | | | | | | | | | | | | | | | |
| Moray | 60 | 56 | 32 | 30 | 27-52 wks | 24 | 96 | 1 | 4 | 52+ wks | 20 | 87 | 0 | 0 | 8-14 days | 11 | 92 | 1 | 8 | 27-52 wks | 0 | 0 | 1 | 100 | 52+ wks |
| Orkney | 1 | 50 | 1 | 50 | 27-52 wks | 0 | 0 | 0 | 0 | | 0 | 0 | 0 | 0 | | 0 | 0 | 0 | 0 | | 0 | 0 | 0 | 0 | |
| Perth and Kinross | 10 | 5 | 154 | 82 | 52+ wks | 5 | 45 | 6 | 55 | 52+ wks | 1 | 50 | 1 | 50 | 5-8 wks | 2 | 29 | 5 | 71 | 27-52 wks | 0 | 0 | 0 | 0 | |
| Shetland | 5 | 100 | 0 | 0 | 8-14 days | 1 | 100 | 0 | 0 | <7 days | 4 | 67 | 2 | 33 | 27-52 wks | 0 | 0 | 0 | 0 | | 0 | 0 | 0 | 0 | |
| West Lothian | 178 | 50 | 170 | 47 | 27-52 wks | 18 | 90 | 2 | 10 | 15-21 days | 43 | 73 | 16 | 27 | 27-52 wks | 64 | 74 | 21 | 24 | 27-52 wks | 0 | 0 | 1 | 100 | 52+ wks |
| Western Isles | | | | | | | | | | | | | | | | | | | | | | | | | |
| Scotland | 3393 | 40 | 4596 | 54 | | 691 | 57 | 469 | 39 | | 369 | 46 | 390 | 49 | | 596 | 51 | 544 | 46 | | 175 | 44 | 222 | 55 | |

1 - Time between date referral received / first contact and the first appointment date offered for assessment for those assessed during the reporting period OR the time between date referral received / first contact and the end of the reporting period for those still waiting for assessment.

2 - Time between date care plan is agreed / decision on treatment is made / date client ready for treatment and the first appointment date offered for an intervention for those receiving this intervention during the reporting period OR the time between date care plan is agreed / decision on treatment is made / date client ready for treatment and the end of the reporting period for those still waiting for an intervention.

3 - Includes the number of clients who received an assessment appointment within 21 days of referral

4 - Includes the number of clients who received an assessment appointment more than 21 days after referral AND the number of clients who are still waiting for an assessment appointment and have already waited more than 21 days

5 - Includes the number of clients who received a treatment appointment within 14 days of date care plan agreed / date decision on treatment made / date client ready for treatment

6 - Includes the number of clients who received a treatment appointment more than 14 days after treatment decision AND the number of clients who are still waiting for a treatment appointment and have already waited more than 14 days

Note: Clients who are still waiting for an appointment and have waited less than 21 days for an assessment appointment or less than 14 days for a treatment appointment are not included in these figures.

Waiting Times Summary - Referral to Discharge
July 2004 - June 2005

Referral to Discharge for...

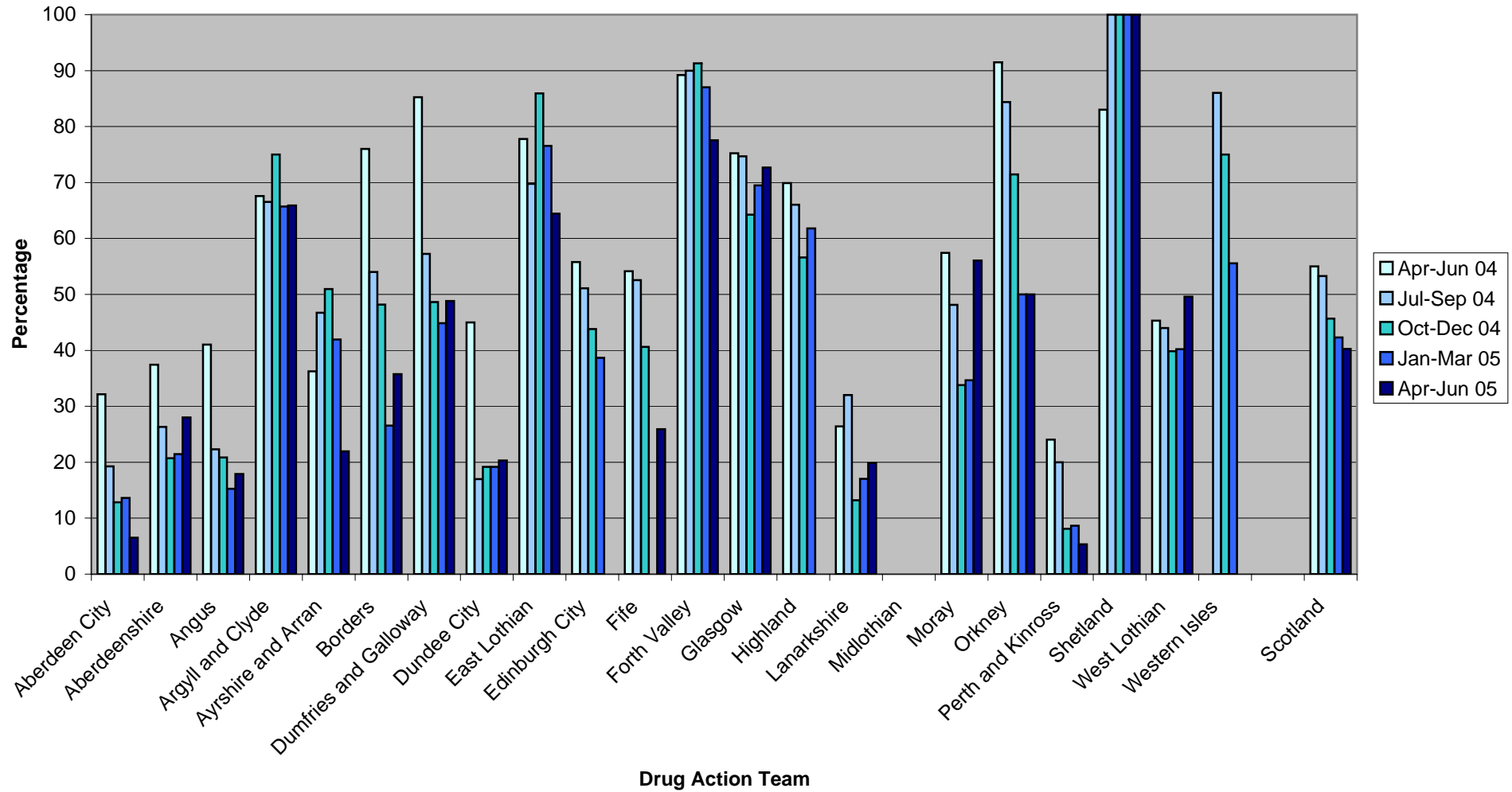
| | Planned Discharges | | | | Unplanned Discharges | | | | Disciplinary Discharges | | | |
|-------------------------|--------------------|-----------|--------------|-----------|----------------------|-----------|--------------|-----------|-------------------------|-----------|--------------|-----------|
| | Jan-Mar 05 | | Apr-Jun 05 | | Jan-Mar 05 | | Apr-Jun 05 | | Jan-Mar 05 | | Apr-Jun 05 | |
| | >12 wks n | % | >12 wks n | % | >12 wks n | % | >12 wks n | % | >12 wks n | % | >12 wks n | % |
| <i>Drug Action Team</i> | | | | | | | | | | | | |
| Aberdeen City | 28 | 85 | 43 | 90 | 35 | 64 | 23 | 64 | 1 | 100 | 0 | 0 |
| Aberdeenshire | 4 | 67 | 31 | 82 | 14 | 64 | 13 | 43 | 0 | 0 | 0 | 0 |
| Angus | 2 | 20 | 3 | 14 | 10 | 29 | 9 | 24 | 1 | 8 | 0 | 0 |
| Argyll and Clyde | 49 | 43 | 38 | 27 | 60 | 62 | 39 | 29 | 3 | 75 | 1 | 9 |
| Ayrshire and Arran | 195 | 63 | 7 | 18 | 103 | 33 | 31 | 36 | 0 | 0 | 0 | 0 |
| Borders | 18 | 55 | 17 | 55 | 22 | 43 | 17 | 29 | 1 | 33 | 3 | 75 |
| Dumfries and Galloway | 25 | 42 | 44 | 49 | 20 | 31 | 28 | 40 | 0 | 0 | 0 | 0 |
| Dundee City | 10 | 23 | 19 | 40 | 34 | 39 | 58 | 41 | 0 | 0 | 0 | 0 |
| East Lothian | 13 | 20 | 12 | 17 | 7 | 30 | 30 | 64 | 1 | 100 | 0 | 0 |
| Edinburgh City | 75 | 50 | | | 104 | 50 | | | 0 | 0 | | |
| Fife | 112 | 58 | 155 | 58 | 243 | 47 | 221 | 37 | 5 | 50 | 1 | 100 |
| Forth Valley | 19 | 29 | 33 | 25 | 15 | 12 | 19 | 70 | 0 | 0 | 0 | 0 |
| Glasgow | 102 | 35 | 78 | 25 | 120 | 36 | 94 | 24 | 8 | 33 | 3 | 60 |
| Highland | 10 | 56 | | | 8 | 31 | | | 1 | 33 | | |
| Lanarkshire | 16 | 25 | 52 | 66 | 42 | 24 | 59 | 35 | 0 | 0 | 2 | 50 |
| Midlothian | | | | | | | | | | | | |
| Moray | 41 | 80 | 15 | 42 | 13 | 68 | 14 | 61 | 0 | 0 | 0 | 0 |
| Orkney | 0 | 0 | 0 | 0 | | | 0 | 0 | 0 | 0 | 0 | 0 |
| Perth and Kinross | 0 | 0 | 6 | 38 | 16 | 42 | 11 | 48 | 0 | 0 | 0 | 0 |
| Shetland | 1 | 50 | 0 | 0 | 0 | 0 | 0 | 0 | 0 | 0 | 0 | 0 |
| West Lothian | 45 | 69 | 54 | 65 | 23 | 20 | 55 | 35 | 5 | 83 | 1 | 100 |
| Western Isles | 1 | 33 | | | | | | | | | | |
| Scotland | 766 | 49 | 607 | 42 | 889 | 39 | 721 | 36 | 26 | 34 | 11 | 27 |

**Waiting Times Summary: Start of Treatment to Discharge
Date / Quarter**

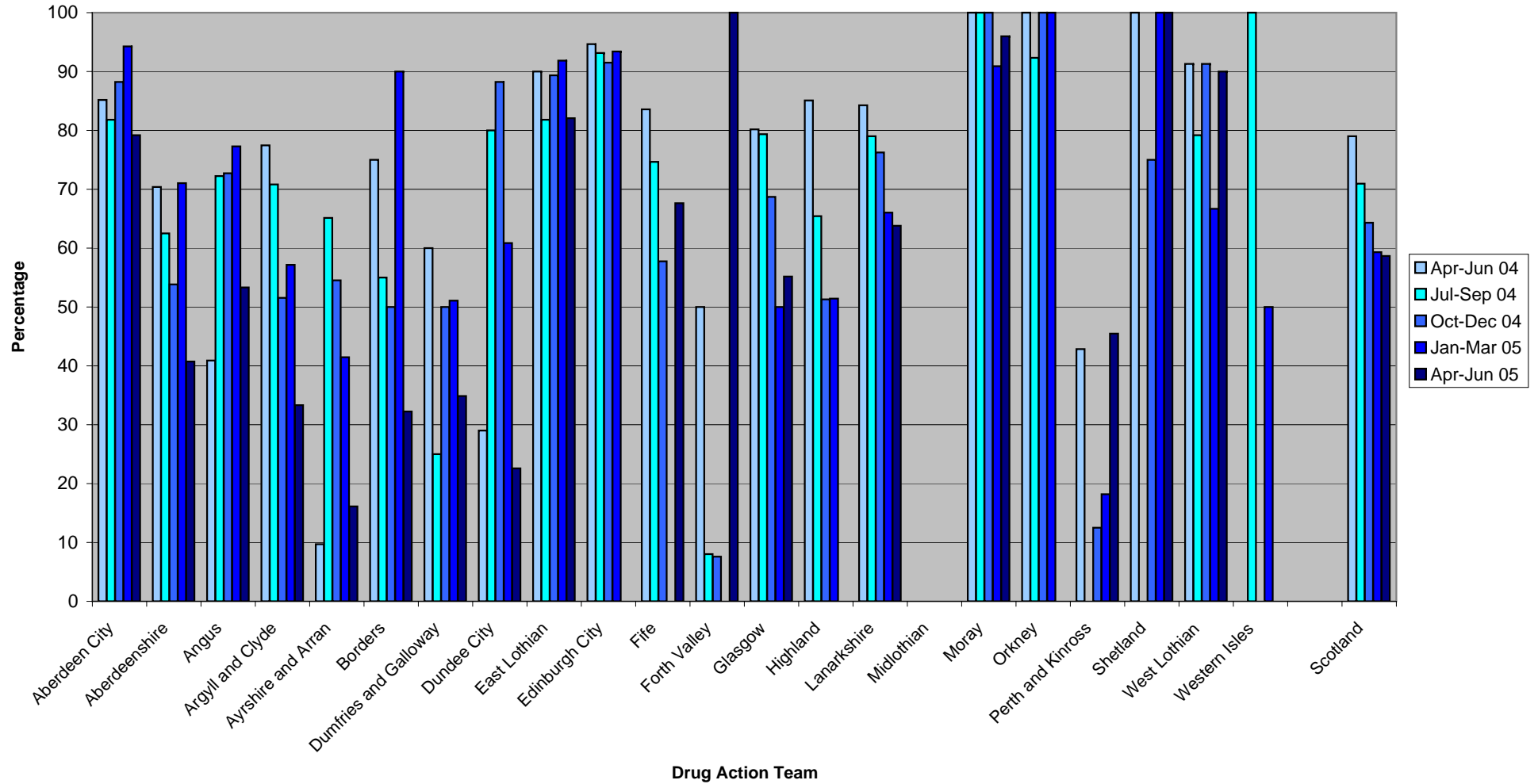
Start of Treatment to Discharge for...

| | Planned Discharges | | | | Unplanned Discharges | | | | Disciplinary Discharges | | | |
|-------------------------|--------------------|-----------|--------------|-----------|----------------------|-----------|--------------|-----------|-------------------------|-----------|--------------|-----------|
| | Jan-Mar 05 | | Apr-Jun 05 | | Jan-Mar 05 | | Apr-Jun 05 | | Jan-Mar 05 | | Apr-Jun 05 | |
| | >12 wks n | % | >12 wks n | % | >12 wks n | % | >12 wks n | % | >12 wks n | % | >12 wks n | % |
| <i>Drug Action Team</i> | | | | | | | | | | | | |
| Aberdeen City | 16 | 73 | 9 | 60 | 8 | 47 | | | 1 | 100 | 0 | 0 |
| Aberdeenshire | 1 | 25 | 24 | 69 | 7 | 47 | 7 | 44 | 0 | 0 | 0 | 0 |
| Angus | 1 | 33 | 1 | 13 | 1 | 50 | 1 | 13 | 1 | 8 | 0 | 0 |
| Argyll and Clyde | 15 | 48 | 12 | 50 | 50 | 75 | | | 3 | 75 | 1 | 100 |
| Ayrshire and Arran | 46 | 61 | 4 | 44 | 15 | 39 | 7 | 47 | 0 | 0 | 0 | 0 |
| Borders | 7 | 33 | 15 | 54 | 6 | 33 | 5 | 16 | 1 | 33 | 1 | 25 |
| Dumfries and Galloway | 12 | 40 | 25 | 54 | 8 | 40 | 10 | 48 | 0 | 0 | 0 | 0 |
| Dundee City | 4 | 80 | 9 | 50 | 0 | 0 | 3 | 50 | 0 | 0 | 0 | 0 |
| East Lothian | 7 | 27 | 7 | 29 | 2 | 25 | 2 | 15 | 1 | 100 | 0 | 0 |
| Edinburgh City | 19 | 56 | | | 26 | 47 | | | 0 | 0 | | |
| Fife | 66 | 48 | 69 | 45 | 50 | 40 | 37 | 36 | 4 | 67 | 0 | 0 |
| Forth Valley | 15 | 56 | 23 | 33 | 12 | 36 | 9 | 39 | 0 | 0 | 0 | 0 |
| Glasgow | 47 | 24 | 41 | 19 | 29 | 27 | 28 | 27 | 5 | 71 | 2 | 50 |
| Highland | 6 | 60 | | | 4 | 29 | | | 1 | 100 | | |
| Lanarkshire | 10 | 34 | 42 | 69 | 15 | 54 | 15 | 42 | 0 | 0 | 0 | 0 |
| Midlothian | | | | | | | | | | | | |
| Moray | 29 | 81 | 12 | 67 | 2 | 50 | 7 | 47 | 0 | 0 | 0 | 0 |
| Orkney | 0 | 0 | 0 | 0 | 0 | 0 | 0 | 0 | 0 | 0 | 0 | 0 |
| Perth and Kinross | 0 | 0 | 0 | 0 | 0 | 0 | 0 | 0 | 0 | 0 | 0 | 0 |
| Shetland | 0 | 0 | 0 | 0 | 0 | 0 | 0 | 0 | 0 | 0 | 0 | 0 |
| West Lothian | 14 | 58 | 33 | 70 | 4 | 44 | 17 | 38 | 5 | 83 | 1 | 100 |
| Western Isles | 1 | 100 | | | 0 | 0 | | | 0 | 0 | | |
| Scotland | 316 | 44 | 326 | 42 | 239 | 43 | 148 | 34 | 22 | 49 | 5 | 23 |

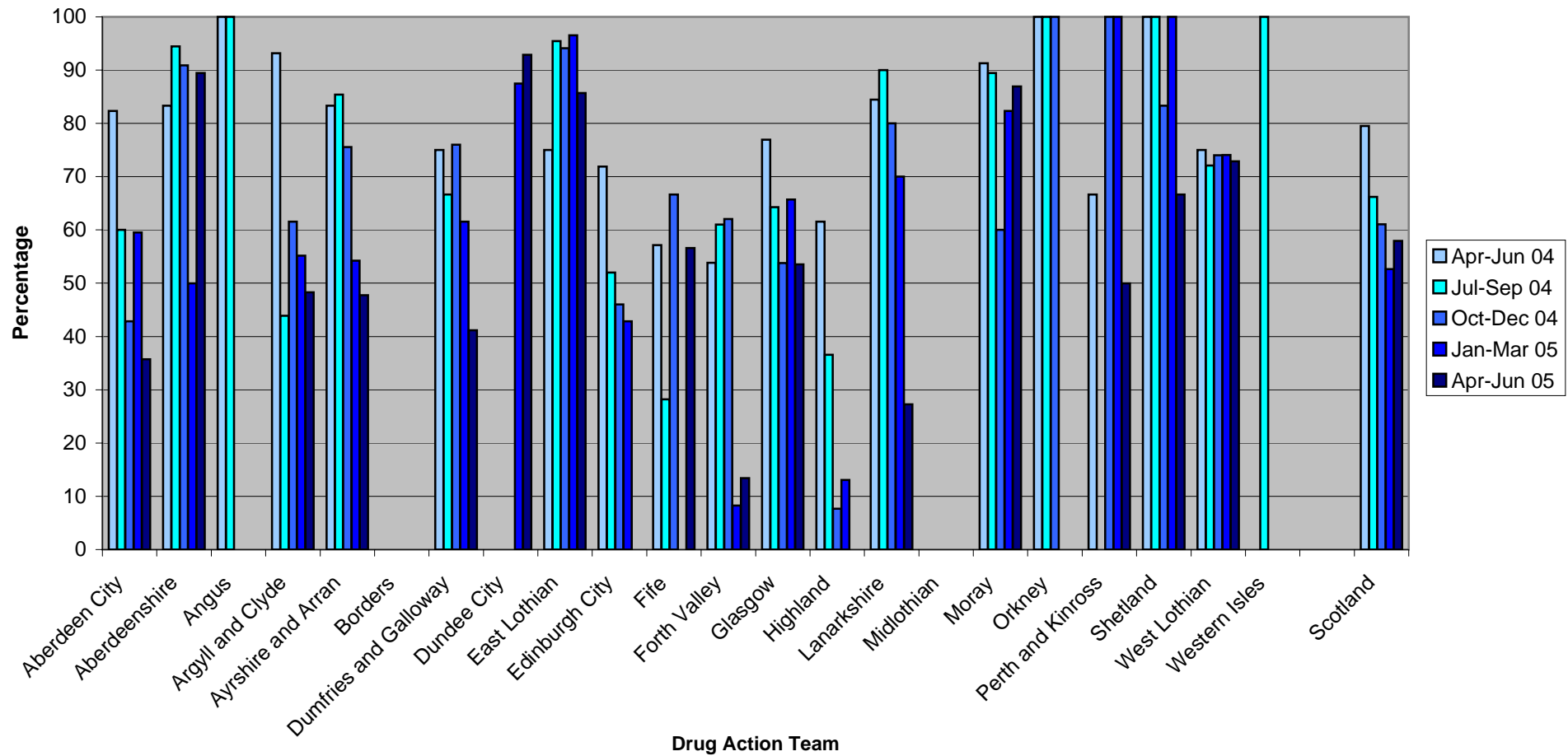
Waiting Times Summary: Percentage of clients receiving an assessment appointment within 21 days of referral



Waiting Times Summary: Percentage of clients who receive structured preparatory and motivational interventions within 14 days of treatment decision (care plan)



Waiting Times Summary: Percentage of clients who receive prescribed drug treatment within 14 days of treatment decision (care plan)



Waiting Times Summary: Percentage of clients who receive community support and/or rehabilitation within 14 days of treatment decision (care plan)

