

# A2 Psychiatric inpatient statistics

## Key Points

- There were 33 987 psychiatric discharges during 2000/01, 1 134 (3.3 per cent) of which had a main diagnosis of drugs misuse, making it the 9<sup>th</sup> *most common condition*. (Tables A2.1 and A2.2)
- Just over two-thirds of drugs misuse discharges were amongst males. The majority were in those aged 25 and over, with 62 per cent of main diagnoses, and 67 per cent of all diagnoses, being made in these age groups. Only a handful (3 main, 4 all) were under 15 years old. (Table A2.5)
- Over the five-year period 1996/97 to 2000/01, the number of psychiatric discharges for drugs misuse increased by 12 per cent for the main diagnosis, and by 28 per cent for all diagnosis. (Table A2.1)
- In the under 20's, cannabinoid-related diagnoses are more likely (13 per cent in the under 20s, 4.4 per cent amongst the 20-29 year olds, and 6.1 per cent in the over 30s), and problems with opiates are less common (27 per cent, 34 per cent, 31 per cent). (Table A2.5)
- Periods of hospitalisation are generally longer for psychiatric admissions, with the proportion of patients being discharged in less than a week being 42 per cent compared to 89 per cent for general acute admissions. (Table A2.6)

Health impact

## Introduction

Tables A2.1 to A2.6 contain information on admissions to and discharges from mental illness specialties. These statistics are derived from data collected through the mental health inpatient and day case return (SMR04) which records information at admission and discharge. On the SMR04 form, up to six separate diagnoses can be recorded on discharge. A diagnosis in the first position is the principal diagnosis on discharge. A diagnosis 'in any position', refers to the occurrence of a diagnosis in any of the six positions (including first and supplementary).

Figures for all admissions, re-admissions and discharges relate to the number of episodes not to the number of individual patients admitted or discharged. Each individual may have more than one episode. First admissions relate to first ever admissions to a mental illness specialty, and therefore approximate to the number of people. It is also important to note that re-admissions will include patients who have returned for treatment after a long period of time, as well as those who have been diagnosed after a short interval.

Diagnosis is recorded on both the admission and the discharge part of the record and diagnosis on discharge may differ from diagnosis on admission. The tables presented here are based on diagnosis on discharge. Drugs misuse is defined using the same group of ICD 10 codes outlined in section A1 (page 4). In Tables A2.2 - A2.4 diagnoses have been grouped together into the following short list of conditions based on the International Classification of Diseases 10<sup>th</sup> Revision (ICD10):

ICD10 Code	Description
F00 – F03	Dementia
F10.1 – F10.9	Alcohol Misuse
F11.1 – F19.9	Drug Misuse
F20	Schizophrenia
F30-F39	Mood (Affective) Disorders
F31	Bipolar Affective Disorders
F32	Depressive Episode
F33	Recurrent Depressive Disorder
F04, F05, F22, F23, F24, F25	Other Psychotic Disorders
F80, F81, F82, F84, F88, F89, F90, F93, F94	Disorders of Childhood
F40 – F48	Neurotic, Stress-related and Somatoform Disorders
F60	Personality Disorders
F70 – F79	Mental Handicap
All other codes from chapter 5	Other Conditions

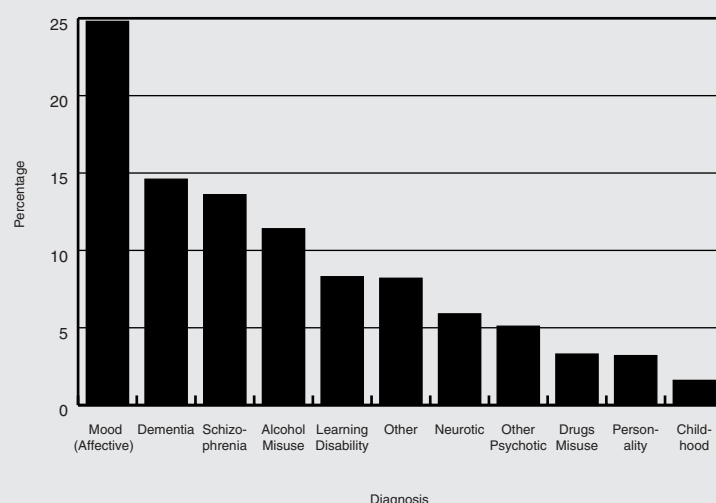
Differences between the figures published here, and those published in the previous (2001) edition of Drugs Misuse Statistics Scotland will reflect an increased completeness of records received from a number of NHS Board areas.

An initial interpretation of the data is provided along with the tables. Work continues on developing and refining our understanding of these analyses and a more in-depth interpretation will be provided in future publications.

## Demographics (Tables A2.1, A2.2, A2.3, A2.4)

There were 33 987 psychiatric discharges during 2000/01, 1 134 (3.3 per cent) of which had a main diagnosis of drugs misuse, making it the 9<sup>th</sup> most common condition (see Chart A2.1). It was the primary diagnosis for slightly more first admissions (4.8 per cent) than readmissions (2.8 per cent), but one possible explanation may be the high proportion of patients with chronic conditions involving repeat admissions, for example schizophrenia. Only 30 per cent of discharges with a main drugs misuse diagnosis also listed supplementary diagnoses, the most common being mood affective disorders (18 per cent of discharges with a main diagnosis of drugs misuse) and disorders due to alcohol use (13 per cent). In the 584 cases where drugs misuse was given as the second diagnosis on discharge, schizophrenia (27 per cent), mood affective disorders (20 per cent), and disorders due to alcohol use (17 per cent) were the most common primary diagnoses.

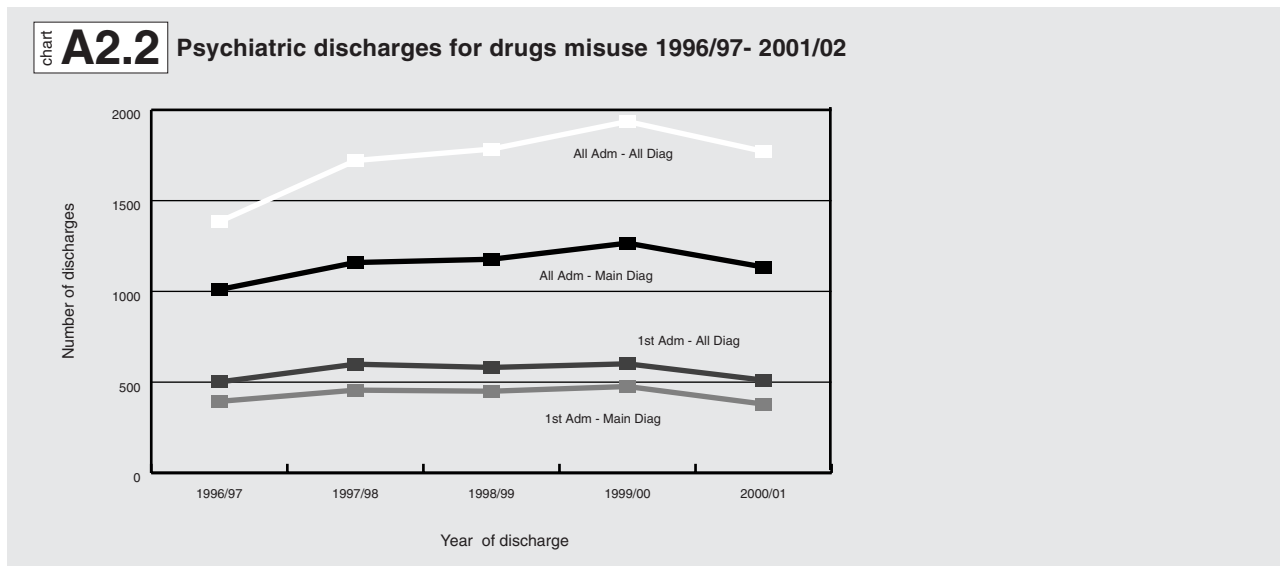
chart **A2.1** Main diagnosis relating to psychiatric discharge 2001/02



As with both SMR01 (see section A1), just over two-thirds of drugs misuse discharges were amongst males. The majority were in those aged 25 and over, with 62 per cent of main diagnoses, and 67 per cent of all diagnoses, being made in these age groups. Only a handful (3 main, 4 all) were under 15 years old. Drug-related discharges most commonly occurred in the Greater Glasgow NHS Board (25 per cent of the total), and very few were seen in the Borders, the Highlands, and the Islands (5 per cent combined). (Table A2.1)

Over the five-year period 1996/97 to 2000/01, the number of psychiatric discharges for drugs misuse increased by 12 per cent for the main diagnosis, and by 28 per cent for all diagnoses. For first admissions alone, the number with a main diagnosis of drugs misuse actually fell by 3.8 per cent, and only a modest increase (2.0 per cent) was seen in all diagnoses, suggesting that much of the rise is due to an increase in the number of readmissions. A more detailed examination of the trend (see Chart A2.2) shows that, whilst discharges did increase up to 1999/00, there has been a sizeable decrease over the past year. It should be noted, however, that the figures for the last available year (2000/01) are provisional, and it is possible that the number of discharges may increase slightly for this year. (Table A2.1)

Note: Figures for 2000/01 are provisional



### Type of drugs misuse (Table A2.5)

Nearly a third of all psychiatric discharges for drug misuse explicitly indicated the involvement of opiates, 11 per cent stimulants other than cocaine, and 5.9 per cent cannabinoids. Over 40 per cent of discharges, however, specified problems relating either to multiple drug use or to the use of other, unspecified psychoactive substances. As with SMR01, opioid-related discharges are likely to be recorded under multiple drug use, as well as under a specific diagnosis, and the proportion of psychiatric discharges involving opiates is, therefore, likely to be an underestimate. Cocaine was listed in only 4 (0.4 per cent) discharges (see table below).

Type of Drug	No. of Discharges	Percentage
Multiple/Other	502	44.3
Opioids	364	32.1
Other Stimulants	125	11.0
Cannabinoids	67	5.9
Sedatives/Hypnotics	61	5.4
Hallucinogens	6	0.5
Volatile Solvents	5	0.4
Cocaine	4	0.4

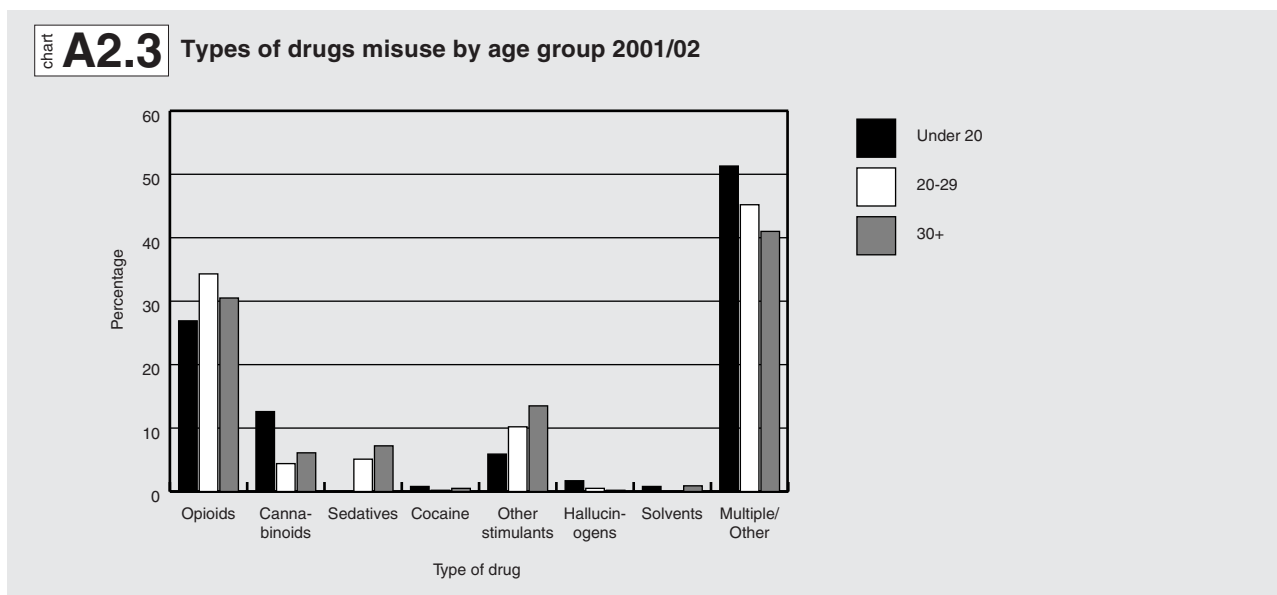
Note: The above figures are based on the main diagnosis alone and hence, unlike the equivalent acute admissions table, each patient is recorded as having only one drug-related diagnosis

Wide variations are again seen across Scotland, with the highest proportion of psychiatric discharges involving opiates being in Dumfries & Galloway (59 per cent), compared to 15 per cent in Fife. The reverse pattern is, however, seen with respect to multiple/other drug use, suggesting possible differences in recording practices. Although regional variations in relation to cocaine cannot be examined due to very small numbers, differences can be seen in the proportion of discharges involving stimulants of other types (32 per cent Greater Glasgow, 1.2 per cent Ayrshire & Arran).

Psychiatric discharges explicitly indicating the involvement of opiates are more likely amongst females (39 per cent to 29 per cent). Diagnoses of multiple/other drug misuse are, however, recorded more often for males (46 per cent to 39 per cent). The actual level of opiate use amongst males is, therefore, likely to be closer to that for females. The types of drugs used are otherwise broadly similar by gender with the exception of sedatives/hypnotics (11 per cent (female) to 4.8 per cent (male)) and other stimulants (7.5 per cent (female) to 13 per cent (male)).

As with general acute admissions, differences are seen across the age groups (see Chart A2.3), although these are not as marked. In the youngest age group, cannabinoid-related diagnoses are more likely (13 per cent in the under 20s, 4.4 per cent amongst the 20-29 year olds, and 6.1 per cent in the over 30s), and problems with opiates are less common (27 per cent, 34 per cent, 31 per cent). In contrast to SMR01, diagnoses relating to the use of stimulants other than cocaine increase with age, from 5.8 per cent in those under 20 to 14 per cent in the 30+ age group.

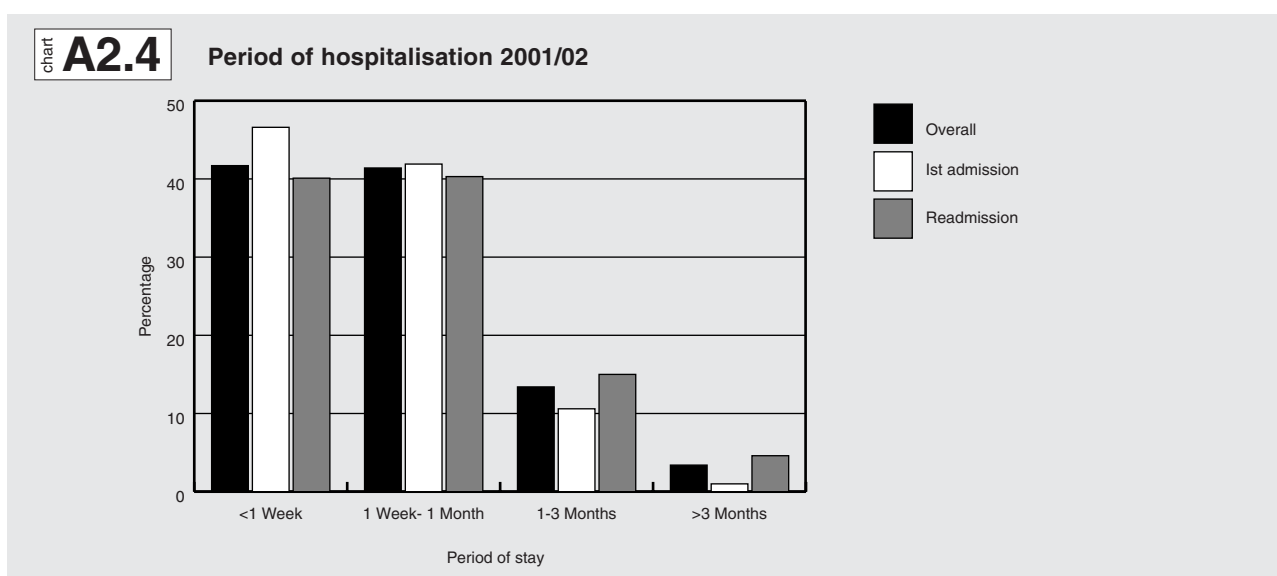
Health impact



Over the past year, the largest change in the types of drugs recorded has been in relation to multiple/other drugs where the proportion has fallen from 52 per cent, to 44 per cent. This contrasts with a slight increase in the proportion of discharges including the specific drug diagnoses (possibly indicating a change in recording practices), the most notable of which is stimulants other than cocaine (7.2 per cent to 11 per cent), (see Drug Misuse Statistics Scotland 2001).

### Hospital episode details (Table A2.6)

Periods of hospitalisation are generally longer for psychiatric admissions (see Chart A2.4), with the proportion of patients being discharged in less than a week being 42 per cent compared to 89 per cent for acute admissions. Furthermore, longer stays are also seen amongst readmissions (20 per cent >1 month) than amongst first admissions (12 per cent >1 month). Similar patterns are seen for males and females, but there are some differences by age. The proportion of hospitalisations under a week is lowest in the 35+ age group (33.2 per cent to 44 per cent for the other groups combined). Conversely, 45 per cent of the over 35s are admitted for between 1 week and 1 month, compared to 34 per cent of the under 20s. Longer periods of stay (>1 month) are broadly similar across the age groups.



## A2.1 Psychiatric inpatient discharges with a diagnosis of drug misuse<sup>1,2</sup> ; discharge diagnosis : 1996/97<sup>r</sup> - 2000/01<sup>p</sup>

previous psychiatric inpatient status, NHS board of residence and council area of residence

	1996/97 <sup>r</sup>		1997/98 <sup>r</sup>		1998/99 <sup>r</sup>		1999/00 <sup>r</sup>		2000/01 <sup>p</sup>	
	Main	All	Main	All	Main	All	Main	All	Main	All
<b>All admissions</b>	<b>1 010</b>	<b>1 384</b>	<b>1 159</b>	<b>1 721</b>	<b>1 177</b>	<b>1 784</b>	<b>1 266</b>	<b>1 936</b>	<b>1 134</b>	<b>1 771</b>
<b>First admission</b>	<b>394</b>	<b>501</b>	<b>456</b>	<b>599</b>	<b>450</b>	<b>581</b>	<b>476</b>	<b>601</b>	<b>379</b>	<b>511</b>
<i>by NHS board of residence</i>										
Argyll & Clyde	98	139	119	187	115	190	112	179	148	226
Ayrshire & Arran	101	131	164	207	168	238	176	235	161	204
Borders	35	43	20	33	24	39	29	36	24	33
Dumfries & Galloway	30	35	37	46	28	40	24	37	29	48
Fife	36	56	59	99	58	93	59	84	46	71
Forth Valley	52	74	48	66	38	67	37	71	38	74
Grampian	72	83	54	67	51	64	54	83	51	71
Greater Glasgow	232	286	285	422	310	437	343	490	286	424
Highland	23	41	28	50	32	48	48	75	33	51
Lanarkshire	79	100	96	120	104	137	100	131	116	164
Lothian	103	183	110	194	107	172	131	243	93	199
Tayside	97	141	97	167	92	178	71	158	50	103
Island Boards <sup>3</sup>	3	3	-	2	1	1	2	3	2	6
Other/not known <sup>4</sup>	49	69	42	61	49	80	80	111	57	97
<i>by council area</i>										
Aberdeen City	46	53	35	43	36	43	38	52	28	37
Aberdeenshire	17	21	15	20	9	11	12	16	11	13
Angus	14	17	9	15	9	12	12	19	10	14
Argyll and Bute	8	8	16	18	12	15	12	15	13	14
Ayrshire East	41	56	49	62	34	52	63	82	55	67
Ayrshire North	38	48	78	103	96	126	67	95	66	86
Ayrshire South	20	25	35	40	38	59	41	52	37	48
Borders	35	43	20	33	24	39	29	36	24	33
Clackmannanshire	6	8	5	8	7	10	8	11	11	18
Dumfries and Galloway	30	35	37	46	28	40	24	37	29	48
Dunbartonshire East	8	9	14	18	7	11	22	28	17	20
Dunbartonshire West	41	48	51	70	18	41	22	48	10	20
Dundee City	59	93	69	124	57	106	48	92	29	62
Edinburgh City	67	125	73	138	73	129	81	144	49	113
Falkirk	26	37	17	28	16	30	15	36	17	29
Fife	36	55	59	97	58	93	59	84	46	71
Glasgow City	184	229	240	360	283	393	297	420	260	382
Highland	23	41	28	50	32	48	48	75	33	51
Inverclyde	14	26	7	14	26	40	29	53	27	46
Lanarkshire North	66	87	74	92	70	92	55	73	57	84
Lanarkshire South	30	32	32	42	41	55	52	70	62	88
Lothian East	10	14	8	16	4	4	15	22	10	12
Lothian West	11	18	16	21	15	18	26	51	21	45
Midlothian	15	26	12	18	15	21	9	26	12	28
Perth and Kinross	24	31	20	29	26	60	11	47	11	27
Renfrewshire	37	57	56	93	55	88	57	76	81	118
Renfrewshire East	18	25	9	20	17	27	7	12	20	39
Stirling	18	27	25	29	15	27	14	24	10	27
Other Council Areas <sup>5</sup>	12	12	4	6	7	11	6	18	14	27
Other/not known <sup>3</sup>	56	78	46	68	49	83	87	122	64	104

1 Excludes misuse of tobacco or alcohol.

2 'Main' is the Primary diagnosis; 'All' includes supplementary diagnoses.

3 Orkney, Shetland and Western Isles NHS boards.

4 'Other' includes patients resident outwith Scotland or those where NHS board or council area of residence is not known.

5 Eilean Siar, Moray, Orkney and Shetland councils.

r Revised.

p Provisional.

Source : ISD Scotland (SMR04).

## A2.2 Psychiatric inpatient discharges by main discharge diagnosis : 2000/01<sup>p</sup>

all discharges by previous psychiatric inpatient status and gender

Health impact

	Total	Males	Females
<b>All discharges<sup>1,2</sup></b>	<b>33 987</b>	<b>17 818</b>	<b>16 169</b>
Dementia	4 947	2 126	2 821
Mental and behavioural disorders due to use of alcohol	3 888	2 730	1 158
Mental and behavioural disorders due to drug misuse	1 134	788	346
Schizophrenia	4 614	3 262	1 352
Mood (affective) disorders	8 438	3 248	5 190
- Bipolar affective disorder	2 122	883	1 239
- Depressive episode	4 520	1 689	2 831
- Recurrent depressive disorder	1 134	345	789
Other psychotic disorders	1 746	989	757
Disorders of Childhood	534	304	230
Neurotic, stress related and somatoform disorders	2 006	847	1 159
Personality disorder	1 074	381	693
Mental handicap	2 817	1 680	1 137
Other	2 789	1 463	1 326
<b>First admissions<sup>2</sup></b>	<b>7 908</b>	<b>3 952</b>	<b>3 956</b>
Dementia	1 645	658	987
Mental and behavioural disorders due to use of alcohol	1 051	738	313
Mental and behavioural disorders due to drug misuse	379	260	119
Schizophrenia	418	276	142
Mood (affective) disorders	2 170	885	1 285
- Bipolar affective disorder	197	81	116
- Depressive episode	1 651	687	964
- Recurrent depressive disorder	170	50	120
Other psychotic disorders	600	319	281
Disorders of Childhood	34	27	7
Neurotic, stress related and somatoform disorders	737	335	402
Personality disorder	146	79	67
Mental handicap	152	86	66
Other	576	289	287
<b>Re-admissions<sup>2,3</sup></b>	<b>25 128</b>	<b>13 387</b>	<b>11 741</b>
Dementia	3 028	1 364	1 664
Mental and behavioural disorders due to use of alcohol	2 720	1 909	811
Mental and behavioural disorders due to drug misuse	710	497	213
Schizophrenia	4 125	2 935	1 190
Mood (affective) disorders	6 074	2 292	3 782
- Bipolar affective disorder	1 904	796	1 108
- Depressive episode	2 746	957	1 789
- Recurrent depressive disorder	932	285	647
	1 086	644	442
Other psychotic disorders	500	277	223
Disorders of Childhood	500	277	223
Neurotic, stress related and somatoform disorders	1 216	485	731
Personality disorder	898	289	609
Mental handicap	2 601	1 548	1 053
Other	2 170	1 147	1 023

1 Includes type of admission 'not known'.

2 Includes patients with learning disabilities.

3 Includes transfers in from other psychiatric inpatient care.

p Provisional.

Source : ISD Scotland (SMR04).

## A2.3 Psychiatric inpatient discharges with a main discharge diagnosis of drug misuse<sup>1,2</sup> : 2000/01<sup>p</sup>

supplementary discharge diagnosis

	2nd discharge diagnosis			3rd discharge diagnosis			4th discharge diagnosis		
	Total	Males	Females	Total	Males	Females	Total	Males	Females
<b>All discharges</b>	<b>343</b>	<b>228</b>	<b>115</b>	<b>63</b>	<b>42</b>	<b>21</b>	<b>11</b>	<b>6</b>	<b>5</b>
Dementia	1	1	-	-	-	-	-	-	-
Mental and behavioural disorders due to use of alcohol	45	35	10	4	3	1	-	-	-
Mental and behavioural disorders due to drug misuse	36	26	10	7	6	1	-	-	-
Schizophrenia	21	20	1	2	2	-	1	1	-
Mood (affective) disorders	54	23	31	8	5	3	3	-	3
- Bipolar affective disorder	4	2	2	2	1	1	-	-	-
- Depressive episode	44	19	25	6	4	2	3	-	3
- Recurrent depressive disorder	3	1	2	-	-	-	-	-	-
Other psychotic disorders	16	16	-	1	1	-	1	1	-
Disorders of childhood	-	-	-	-	-	-	-	-	-
Neurotic, stress-related and somatoform disorders	22	10	12	5	1	4	1	-	1
Personality disorder	41	25	16	10	9	1	-	-	-
Mental handicap	1	1	-	-	-	-	-	-	-
Other	106	71	35	26	15	11	5	4	1
No supplementary diagnosis	791	560	231	1071	746	325	1123	782	341

1 Excludes misuse of tobacco or alcohol in main diagnosis.

2 As an individual may have a number of diagnoses in any discharge record, some individuals may appear in more than one column.

p Provisional.

Source : ISD Scotland (SMR04).

Health impact

## A2.4 Psychiatric inpatient discharges with a supplementary discharge diagnosis of drug misuse<sup>1,2</sup> : 2000/01<sup>p</sup>

main discharge diagnosis

Main discharge diagnosis for discharges with a drug-related diagnosis in the :

	2nd position			3rd position			4th position		
	Total	Males	Females	Total	Males	Females	Total	Males	Females
<b>All discharges</b>	<b>584</b>	<b>399</b>	<b>185</b>	<b>105</b>	<b>69</b>	<b>36</b>	<b>7</b>	<b>3</b>	<b>4</b>
Dementia	2	2	-	3	3	-	-	-	-
Mental and behavioural disorders due to use of alcohol	98	66	32	20	13	7	1	1	-
Mental and behavioural disorders due to drug misuse	36	26	10	7	6	1	-	-	-
Schizophrenia	155	137	18	11	11	-	1	1	-
Mood (affective) disorders	116	62	54	25	11	14	3	1	2
- Bipolar affective disorder	38	25	13	4	-	4	-	-	-
- Depressive episode	59	27	32	13	8	5	2	1	1
- Recurrent depressive disorder	9	4	5	7	3	4	-	-	-
Other psychotic disorders	32	25	7	6	6	-	-	-	-
Disorders of childhood	-	-	-	-	-	-	-	-	-
Neurotic, stress-related and somatoform disorders	53	29	24	14	7	7	1	-	1
Personality disorder	68	37	31	16	9	7	-	-	-
Mental handicap	-	-	-	-	-	-	-	-	-
Other	24	15	9	3	3	-	1	-	1

1 Excludes misuse of tobacco or alcohol as a supplementary diagnosis.

2 As an individual may have a number of diagnoses in any discharge record, some individuals may appear in more than one column.

p Provisional.

Source : ISD Scotland (SMR04).

## A2.5 Psychiatric inpatient discharges with a main discharge diagnosis of drug misuse<sup>1</sup> ; drug type : 2000/01<sup>p</sup>

previous psychiatric inpatient status, NHS board of residence, council area of residence, age group and gender

Health impact

	Total	Opioids	Cannab- inoids	Sedatives/ Hypnotics	Cocaine	Other stimulants	Halluc- inogens	Volatile solvents	Mutiple/ Other <sup>7</sup>
<b>Scotland (All discharges)<sup>2</sup></b>	<b>1134</b>	<b>364</b>	<b>67</b>	<b>61</b>	<b>4</b>	<b>125</b>	<b>6</b>	<b>5</b>	<b>502</b>
First admission	379	142	21	19	-	39	4	2	152
Re-admission	710	195	45	40	4	83	2	3	338
<i>by NHS board of residence</i>									
Argyll and Clyde	148	56	8	6	1	2	-	-	75
Ayrshire & Arran	161	49	10	7	-	2	2	-	91
Borders	24	9	2	1	-	2	-	-	10
Dumfries & Galloway	29	17	-	-	-	4	1	-	7
Fife	46	7	3	4	-	4	-	1	27
Forth Valley	38	24	1	5	-	-	-	-	8
Grampian	51	26	2	-	-	4	2	-	17
Greater Glasgow	286	51	12	14	3	92	-	-	114
Highland	33	14	2	-	-	1	-	-	16
Lanark	116	65	12	-	-	4	1	1	33
Lothian	93	18	11	16	-	2	-	1	45
Tayside	50	10	3	4	-	1	-	2	30
Island NHS boards <sup>3</sup>	2	-	-	1	-	-	-	-	1
Other/ not known <sup>4</sup>	57	18	1	3	-	7	-	-	28
<i>by council area</i>									
Aberdeen City	28	18	1	-	-	-	1	-	8
Aberdeenshire	11	6	-	-	-	-	1	-	4
Angus	10	2	-	-	-	-	-	-	8
Argyll and Bute	13	3	2	-	-	2	-	-	6
Ayrshire East	55	20	2	1	-	1	1	-	30
Ayrshire North	66	17	7	6	-	1	1	-	34
Ayrshire South	37	11	1	-	-	-	-	-	25
Borders	24	9	2	1	-	2	-	-	10
Clackmannanshire	11	3	1	2	-	-	-	-	5
Dumfries and Galloway	29	17	-	-	-	4	1	-	7
Dunbartonsire East	17	2	1	-	-	12	-	-	2
Dunbartonsire West	10	-	1	1	1	2	-	-	5
Dundee City	29	7	3	2	-	-	-	1	16
Edinburgh City	49	8	8	5	-	2	-	-	26
Falkirk	17	13	-	3	-	-	-	-	1
Fife	46	7	3	4	-	4	-	1	27
Glasgow City	260	48	8	14	2	77	-	-	111
Highland	33	14	2	-	-	1	-	-	16
Inverclyde	27	10	2	1	-	-	-	-	14
Lanarkshire North	57	30	9	-	-	2	1	1	14
Lanarkshire South	62	35	6	-	-	3	-	-	18
Lothian East	10	2	1	2	-	-	-	-	5
Lothian West	21	3	1	6	-	-	-	1	10
Midlothian	12	5	1	2	-	-	-	-	4
Perth and Kinross	11	1	-	2	-	1	-	1	6
Renfrewshire	81	33	3	3	-	-	-	-	42
Renfrewshire East	20	9	-	1	1	-	-	-	9
Stirling	10	8	-	-	-	-	-	-	2
Other Council Areas <sup>5</sup>	14	2	1	1	-	4	-	-	6
Other/not known <sup>4</sup>	64	21	1	4	-	7	-	-	31
<i>by age group<sup>6</sup></i>									
Under 15 years	3	-	1	-	-	-	-	-	2
15-19 years	116	32	14	-	1	7	2	1	59
20-24 years	307	97	13	16	1	26	3	-	151
25-29 years	279	104	13	14	-	34	-	-	114
30-34 years	225	74	10	12	2	30	1	3	93
35 years and over	204	57	16	19	-	28	-	1	83
<i>by gender</i>									
Male	788	229	44	38	3	99	5	4	366
Female	346	135	23	23	1	26	1	1	136

1 Excludes misuse of tobacco or alcohol.

2 Includes type of admission not known, and cases with a missing or invalid response.

3 Orkney, Shetland and Western Isles NHS boards.

4 Patients resident outwith Scotland or those where NHS board or council area is not known.

5 Eilean Siar, Moray, Orkney and Shetland council areas.

6 Age on admission.

7 Mental and behavioural disorders due to multiple drug use and use of other psychoactive substances.

p Provisional.

Source : ISD Scotland (SMR04).

## A2.6 Psychiatric inpatient discharges with a discharge diagnosis of drug misuse<sup>1</sup> in any position ; length of stay : 2000/01<sup>p</sup>

previous psychiatric inpatient status, NHS board of residence, council area of residence, age group and gender

	Total	less than 1 week	between 1 week and 1 month	between 1 month and 3 months	more than 3 months
<b>Scotland (All discharges)<sup>2</sup></b>	<b>1771</b>	<b>738</b>	<b>734</b>	<b>238</b>	<b>61</b>
First admission	511	238	214	54	5
Re-admission	1202	482	485	180	55
<i>by NHS board of residence</i>					
Argyll and Clyde	226	87	105	23	11
Ayrshire & Arran	204	69	97	34	4
Borders	33	16	14	3	-
Dumfries & Galloway	48	17	19	6	6
Fife	71	34	22	11	4
Forth Valley	74	35	27	9	3
Grampian	71	30	32	8	1
Greater Glasgow	424	194	162	53	15
Highland	51	23	18	8	2
Lanark	164	69	72	22	1
Lothian	199	82	83	33	1
Tayside	103	38	46	11	8
Island Health Boards <sup>3</sup>	6	2	3	1	-
Other/ not known <sup>4</sup>	97	42	34	16	5
<i>by council area</i>					
Aberdeen City	37	13	19	5	-
Aberdeenshire	13	5	7	1	-
Angus	14	6	5	3	-
Argyll and Bute	14	6	6	2	-
Ayrshire East	67	28	27	10	2
Ayrshire North	86	31	38	15	2
Ayrshire South	48	9	30	9	-
Borders	33	16	14	3	-
Clackmannanshire	18	9	8	-	1
Dumfries and Galloway	48	17	19	6	6
Dunbartonshire East	20	11	8	1	-
Dunbartonshire West	20	10	7	3	-
Dundee City	62	22	33	2	5
Edinburgh City	113	46	51	15	1
Falkirk	29	13	11	4	1
Fife	71	34	22	11	4
Glasgow City	382	175	145	47	15
Highland	51	23	18	8	2
Inverclyde	46	15	25	4	2
Lanarkshire North	84	33	40	10	1
Lanarkshire South	88	39	35	14	-
Lothian East	12	5	5	2	-
Lothian West	45	17	19	9	-
Midlothian	28	13	8	7	-
Perth and Kinross	27	10	8	6	3
Renfrewshire	118	41	60	11	6
Renfrewshire East	39	19	11	6	3
Stirling	27	13	8	5	1
Other Council Areas <sup>5</sup>	27	14	9	3	1
Other/not known <sup>3</sup>	104	45	38	16	5
<i>by age group<sup>6</sup></i>					
Under 15 years	4	-	-	2	2
15-19 years	146	66	51	23	6
20-24 years	429	191	167	58	13
25-29 years	436	196	175	51	14
30-34 years	376	159	170	41	6
35 years and over	380	126	171	63	20
<i>by gender</i>					
Male	1217	513	489	170	45
Female	554	225	245	68	16

1 Excludes misuse of tobacco or alcohol

2 Includes type of admission not known, and cases with a missing or invalid response.

3 Orkney, Shetland and Western Isles NHS boards.

4 Patients resident outwith Scotland or those where NHS board or council area of residence is not known.

5 Eilean Siar, Moray, Orkney and Shetland council areas.

6 Age on admission.

p Provisional.

Source : ISD Scotland (SMR04).