

A1**General acute hospital inpatient statistics****Key Points**

- Between 1997/98 and 2001/02, there was a 62 per cent increase in the number of general acute admissions involving drug misuse. Throughout this period, slightly over two-thirds of such admissions were amongst males. The majority (72 per cent) were aged 25 and over whereas only a small number of admissions (44) were recorded amongst those under 15. (Table A1.1)
- In 2001/02, nearly 50 per cent of admissions in the under 15 age group related to cannabinoid use and 20 per cent to the use of stimulants other than cocaine (e.g. ecstasy and amphetamines). The majority of admissions amongst those aged 20 years and over involved the use of opiates. (Table A1.2)
- Just over 10 per cent of drug related admissions were elective in 2000/01, a very similar proportion to that seen in 2000/01. (Table A1.4)
- Nearly 90 per cent of hospitalisations during 2001/02 involved a stay of less than 1 week, with the majority of the remainder being discharged within a month. Only 58 admissions (1 per cent) were for more than a month. (Table A1.6)

Introduction

Data for individual patients are collected by ISD Scotland as a series of Scottish Morbidity Records (SMR).

The SMR datasets constitute a significant local and national information resource, and are used for epidemiological monitoring, health needs assessment, national and local planning and a range of other applications.

SMR01 is an episode based patient record relating to all inpatients and day cases discharged from specialities other than mental health, maternity, neonatal and geriatric long stay specialities in the NHSScotland. A record is generated for each inpatient and day case episode, of which there are about 1 200 000 each year. Each individual patient may have more than one episode. The SMR01 basic data set encompasses patient identification and demographic information, episode management information and general clinical information. Items such as waiting time for inpatient or day case admission and length of stay may be derived from the episode management information.

The tables and charts presented here are derived from the SMR01, and contain information about patients admitted to general hospitals (mainly for emergency treatment), where drugs misuse is diagnosed as a factor in the patient's treatment. Up to six diagnoses are recorded per admission, and episodes with either a main or a supplementary diagnosis of drugs misuse are included. In the tables of drug type (A1.2, A1.3 and A1.7), there is an element of double counting as episodes may be associated with, for example, diagnoses of both opiate and cocaine misuse. Drugs misuse is recorded on the SMR returns using the codes available in the International Classification of Diseases 10th Revision (ICD10). The following codes were used in the analysis presented in this section:

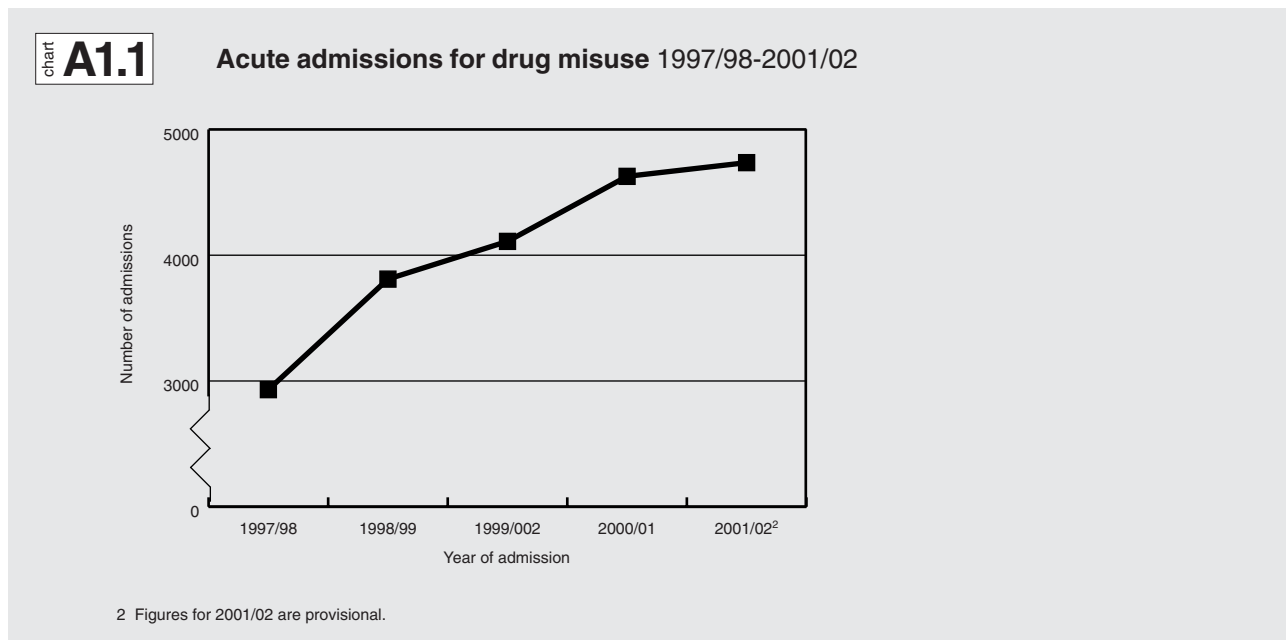
ICD 10 Code	Description	ICD 10 Code	Description
F11	Opioids	F15	Other Stimulants
F12	Cannabinoids	F16	Hallucinogens
F13	Sedatives / Hypnotics	F18	Volatile Solvents
F14	Cocaine	F19	Multiple / Other Psychoactive Substances

Some caution is necessary when using these data as (a) drug misuse may only be suspected and may not always be recorded by the hospital, and (b) where drug misuse is recorded, it may not be possible to identify which drug(s) may be involved. An initial interpretation of the data is provided along with the tables and charts. Work continues on developing and refining our understanding of these analyses and a more in-depth interpretation will be provided in future publications.

Demographics (Table A1.1)

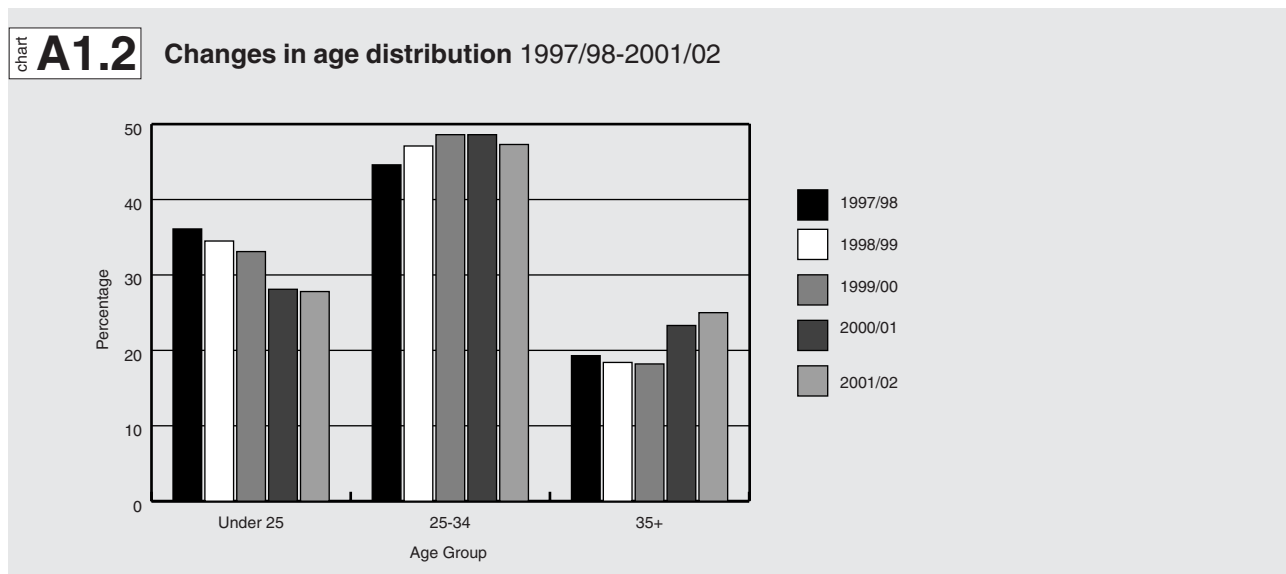
During 2001/02, there were 4 736 admissions for drug misuse to acute general hospitals in Scotland. Just over a third of these (1 729) were in the Greater Glasgow Health Board area, with a further 10 per cent occurring in each of Ayrshire & Arran, and Lothian. There were very few admissions in the Borders, the Highlands, and the Islands, with a total of 87 being recorded for these three Health Boards combined.

Between 1997/98 and 2001/02, there was a 62 per cent increase in the number of acute admissions. Increases were particularly seen in Lothian, where numbers had been falling (from 476 in 1997/98 to 422 in 2000/01) but rose by a third in the past year. Increases in excess of 35 per cent were also seen in Ayrshire & Arran and Dumfries & Galloway during 2001/02.



Health impact

Throughout the period 1997/98 to 2001/02, slightly over two-thirds of drug misuse admissions were amongst males. The majority (72 per cent) were aged 25 and over, with only a small number of admissions (44) being recorded amongst those under 15. The age at admission has risen over the past five years (see Chart A1.2), with the proportion in the 35+ age group increasing from 19 per cent in 1997/98 to 25 per cent in 2001/02. A corresponding fall has been seen in the proportion under 25 (36 per cent to 28 per cent).



Types of drugs misuse (Tables A1.2 and A1.3)

Just over half of all admissions for drug misuse explicitly indicated the involvement of opiates, 5 per cent cannabinoids, and 2 per cent cocaine (see table below). Nearly a third of admissions, however, specified problems relating either to multiple drug use or to the use of other, unspecified psychoactive substances. As opioid related admissions are likely to be recorded under multiple drug use, as well as under a specific diagnosis, the proportion of admissions involving opiates may be an underestimate.

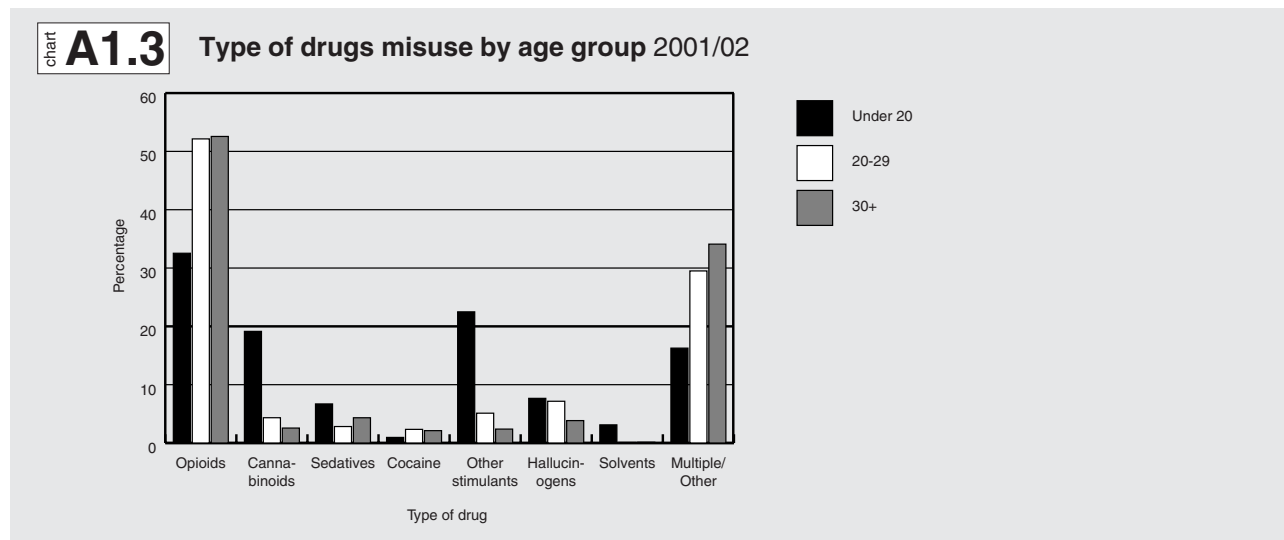
Type of Drug	No. of Admissions	Percentage
Opioids	2 397	50.6
Multiple/Other	1 446	30.5
Hallucinogens	266	5.6
Other Stimulants	253	5.3
Cannabinoids	227	4.8
Sedatives/Hypnotics	184	3.9
Cocaine	100	2.1
Volatile Solvents	18	0.4

Note: The above figures include an element of 'double counting' where a patient is recorded as having more than one drug-related diagnosis.

Patterns of drug use vary across Scotland with the highest proportion of drug related admissions involving opiates being in Ayrshire & Arran (71 per cent), compared to 21 per cent in Tayside. This is matched, however, by a similarly wide variation in the use of multiple or other drugs which may indicate differences in recording practices. In relation to cocaine, the proportion varies from 0 per cent in the Forth Valley, to 3.6 per cent in Lanarkshire, and 6.1 per cent in the Borders (although the numbers in this last area are small).

The types of drugs used are broadly similar for males and females. A slightly higher proportion of admissions amongst females have an explicit diagnosis of opiate misuse (55 per cent to 49 per cent). For males, admissions involving multiple/other drugs, which may include opiates, are more common (32 per cent to 28 per cent).

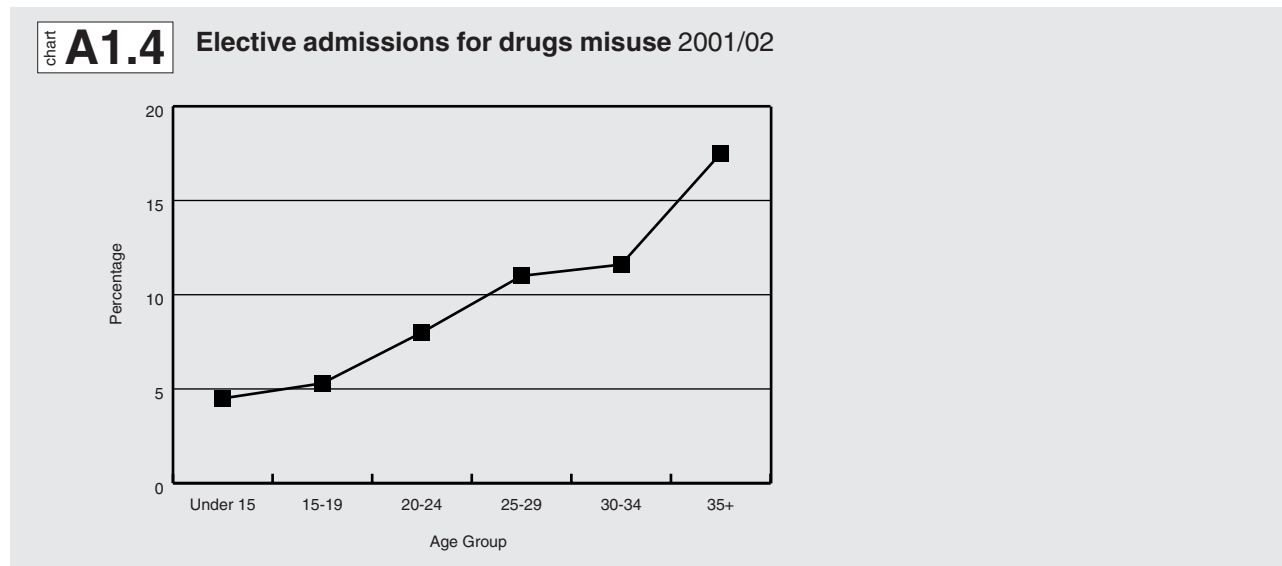
Large differences are seen across the age groups (see Chart A1.3), with the under 15s being unlikely to be admitted for either opioid or cocaine use. Nearly 50 per cent of admissions in this age group relate to cannabinoid use and 20 per cent to the use of stimulants other than cocaine (e.g. ecstasy and amphetamines). Over 50 per cent of admissions in those aged 20+ involve the use of opiates, and the proportion involving multiple/other drugs, possibly including opiates, increases with age (16 per cent in the under 20s, 30 per cent amongst 20-29 year olds, and 34 per cent in the over 30s).



Between 1997/98 and 2001/02, there was a rise of more than 10 per cent in the proportion of admissions involving opiates. In contrast, there was a decline in the proportion associated with the use of multiple/other drugs (36 per cent to 31 per cent), indicating a possible change in recording practices. The proportion involving sedatives fell from 7.4 per cent to 3.9 per cent. Admissions involving cocaine increased, although the overall proportion involved is still low (0.9 per cent to 2.1 per cent).

Hospital episode details (Tables A1.4, A1.5, A1.6, A1.7)

Just over 10% of drug related admissions were elective in 2001/02, a very similar proportion to that seen in 2000/01 (see Drug Misuse Statistics Scotland 2001). This was broadly the same for both males and females. Some differences were seen by age (see Chart A1.4), with only 2 out of 44 (5 per cent) admissions being elective in the under 15 age group, compared to 18 per cent in the 35 and over group. (Table A1.4)



Health impact

The majority of admissions were within the specialisations of general medicine (53 per cent) and general surgery (17 per cent). A further 19 per cent were split more or less equally between communicable diseases, A&E, and orthopaedics. The remainder were across a range of specialties, including cardiology and plastic surgery. There were some variations across Scotland. Over 10 per cent of admissions were to communicable diseases in Fife, Grampian, Lanarkshire, and Lothian. Admissions to A&E were more common in Ayrshire & Arran (20 per cent), Grampian (25 per cent), and Tayside (18 per cent). These regional variations could reflect a difference in admission policies, for example A&E beds are available in Ayrshire and Arran but not in all areas. Females were more likely to be admitted to general medicine (56 per cent to 52 per cent) and to communicable diseases (6.9 per cent to 5.5 per cent). Amongst males, admissions to A&E (7.0 per cent to 5.2 per cent) and orthopaedics (7.0 per cent to 4.1 per cent) were more common. (Table A1.5)

Nearly 90 per cent of hospitalisations involved a stay of less than 1 week, with the majority of the remainder being discharged within a month. Only 58 admissions (1.2 per cent) were for more than a month. A similar pattern was seen for both males and females, but the length of stay did increase steadily with age (see table below). Admissions involving cannabinoids, cocaine, other stimulants, and volatile solvents were generally discharged within a week. Longer periods of hospitalisation occurred amongst those admitted for misuse of opioids, hallucinogens, and multiple/other drugs, with approximately 88 per cent being discharged within a week, and most of the rest being admitted for less than a month. The longest stays were in the group admitted with problems relating to sedative/hypnotic misuse: 81 per cent for less than a week, 16 per cent for less than a month, and 3.3 per cent for greater than a month. (Tables A1.6 and A1.7)

Age Group	<1 Week	1 Week-1 Month	1-3 Months	>3 Months
0-14	100.0			
15-19	96.5	3.5		
20-24	94.6	4.7	0.7	
25-29	89.7	9.2	1.0	
30-34	87.7	11.0	1.3	
35+	82.1	15.7	1.7	0.5

A1.1 | General acute admissions for drug misuse : 1997/98 - 2001/02

NHS board and council area of residence, age group and gender

Health impact

	1997/98 ^r	1998/99 ^r	1999/00 ^r	2000/01 ^r	2001/02 ^p
Scotland	2 931	3 810	4 110	4 627	4 736
<i>by NHS board</i>					
Argyll & Clyde	198	274	334	339	369
Ayrshire & Arran	206	309	314	413	569
Borders	36	27	26	40	33
Dumfries & Galloway	75	81	68	74	101
Fife	104	153	210	231	220
Forth Valley	92	123	114	102	124
Grampian	323	343	424	443	428
Greater Glasgow	1 085	1 567	1 615	1 914	1 729
Highland	29	33	45	44	39
Lanarkshire	105	185	199	318	306
Lothian	476	500	486	422	562
Tayside	133	118	127	154	107
Island boards ¹	8	15	20	8	15
No fixed abode	41	56	107	92	115
Other / not known ²	20	26	21	33	19
<i>by council area</i>					
Aberdeen City	276	277	357	365	336
Aberdeenshire	43	60	62	68	78
Angus	21	18	17	21	19
Argyll & Bute	18	28	41	32	29
Ayrshire East	84	112	126	134	208
Ayrshire North	57	88	105	168	230
Ayrshire South	64	109	83	111	131
Borders	36	27	26	40	33
Clackmannanshire	19	27	18	19	18
Dumfries & Galloway	75	81	68	74	101
Dunbartonshire East	19	23	33	43	27
Dunbartonshire West	38	33	62	83	102
Dundee City	95	72	57	87	65
Edinburgh City	383	385	353	294	415
Falkirk	55	55	54	50	62
Fife	104	153	210	231	220
Glasgow City	977	1 447	1 506	1 748	1 552
Highland	29	33	45	44	39
Inverclyde	112	157	139	157	164
Lanarkshire North	66	140	136	254	234
Lanarkshire South	102	121	112	146	156
Lothian East	22	37	33	32	40
Lothian West	35	35	63	65	73
Midlothian	33	39	36	30	34
Perth & Kinross	17	28	53	46	23
Renfrewshire	35	63	96	80	103
Renfrewshire East	18	15	20	19	29
Stirling	18	41	40	32	42
Other council areas ³	12	21	25	18	29
No fixed abode	41	56	107	92	115
Other / not known ²	27	29	27	44	29
<i>by age group</i>					
0-14	43	30	22	26	44
15-19	353	401	409	379	374
20-24	661	885	931	893	897
25-29	683	968	1 073	1 149	1 157
30-34	624	825	925	1 100	1 082
35+	567	701	750	1 080	1 182
<i>by gender</i>					
Males	1 985	2 668	2 899	3 163	3 264
Females	946	1 142	1 211	1 464	1 472

1 Orkney, Shetland and Western Isles NHS boards.

2 Other includes patients resident outwith Scotland or those where NHS board or council area is not known.

3 Eilean Siar, Moray, Orkney and Shetland councils.

r Revised.

p Provisional.

Source: ISD Scotland (SMR01).

A1.2 | General acute admissions for drug misuse ; drug type¹ : 2001/02^p

NHS board and council area of residence, age group and gender

	Total admissions	Opioids	Cannab- inoids	Sedatives/ Hypnotics	Cocaine	Other Stimulants ⁵	Halluc- inogens	Volatile solvents	Multiple / Other ⁶
Scotland	4 736	2 397	227	184	100	253	266	18	1 446
<i>by NHS board</i>									
Argyll & Clyde	369	243	14	15	5	14	9	1	76
Ayrshire & Arran	569	405	42	30	6	72	7	2	38
Borders	33	7	5	2	2	11	1	-	8
Dumfries & Galloway	101	70	10	3	2	2	2	1	12
Fife	220	68	14	14	3	9	104	1	18
Forth Valley	124	51	3	19	-	8	21	-	26
Grampian	428	282	15	21	9	39	50	3	20
Greater Glasgow	1 729	690	51	19	39	30	18	3	906
Highland	39	13	3	2	1	5	4	1	10
Lanarkshire	306	199	10	3	11	13	20	1	52
Lothian	562	283	50	43	15	32	11	5	171
Tayside	107	22	8	8	3	10	10	-	47
Island boards ²	15	4	-	2	-	6	-	-	3
No fixed abode	115	53	1	3	-	1	7	-	53
Other / not known ³	19	7	1	-	4	1	2	-	6
<i>by council area</i>									
Aberdeen City	336	236	9	14	5	27	38	3	10
Aberdeenshire	78	43	4	5	2	12	11	-	5
Angus	19	3	-	1	2	4	3	-	6
Argyll & Bute	29	7	3	3	-	6	2	1	8
Ayrshire East	208	166	12	8	3	22	2	2	7
Ayrshire North	230	154	23	18	1	31	1	-	17
Ayrshire South	131	85	7	4	2	19	4	-	14
Borders	33	7	5	2	2	11	1	-	8
Clackmannanshire	18	7	-	3	-	1	5	-	2
Dumfries & Galloway	101	70	10	3	2	2	2	1	12
Dunbartonshire East	27	5	1	1	2	1	-	-	17
Dunbartonshire West	102	48	2	2	1	3	4	-	44
Dundee City	65	17	6	5	-	6	3	-	29
Edinburgh City	415	215	34	29	11	17	1	1	141
Falkirk	62	22	-	16	-	4	4	-	19
Fife	220	68	14	14	3	9	104	1	18
Glasgow City	1 552	600	41	15	34	21	16	3	843
Highland	39	13	3	2	1	5	4	1	10
Inverclyde	164	122	-	5	-	2	1	-	34
Lanarkshire North	234	173	6	1	8	6	7	1	33
Lanarkshire South	156	86	10	4	6	15	14	-	29
Lothian East	40	23	7	1	1	2	-	-	8
Lothian West	73	26	4	9	3	12	10	3	13
Midlothian	34	19	5	4	-	1	-	1	9
Perth & Kinross	23	2	2	2	1	-	4	-	12
Renfrewshire	103	65	8	3	4	3	3	-	22
Renfrewshire East	29	21	3	3	-	-	-	-	2
Stirling	42	22	3	-	-	3	12	-	3
Other council areas ⁴	29	7	2	4	2	6	1	-	8
No fixed abode	115	53	1	3	-	1	7	-	53
Other / not known ³	29	13	2	-	4	1	2	-	10
<i>by age group</i>									
0-14	44	2	20	2	-	8	1	8	7
15-19	374	134	60	26	4	86	31	5	61
20-24	897	481	45	36	17	67	62	2	230
25-29	1 157	590	44	22	31	38	85	-	376
30-34	1 082	583	22	30	20	25	54	2	369
35+	1 182	607	36	68	28	29	33	1	403
<i>by gender</i>									
Males	3 264	1 590	181	125	76	183	185	9	1 032
Females	1 472	807	46	59	24	70	81	9	414

1 The figures shown include an element of 'double counting' where a patient is recorded as having more than one drug type e.g opioids and cannabinoids.

2 Orkney, Shetland and Western Isles NHS boards.

3 Other includes patients outwith Scotland or those whose NHS board or council area is not known.

4 Eilean Siar, Moray, Orkney and Shetland councils.

5 Including caffeine.

6 Disorders due to multiple drug use and use of other psychoactive substances.

p Provisional.

Source : ISD Scotland (SMR01).

A1.3 | General acute admissions for drug misuse : 1997/98^r - 2001/02^p

drug type¹

	Opioids	Cannab- inoids	Sedatives/ Hypnotics	Cocaine	Other Stimulants ²	Halluc- inogens	Volatile solvents	Multiple/ Other ³	Total admissions
1997/98 ^r	1 166	129	216	26	195	198	24	1 063	2 931
1998/99 ^r	1 615	252	238	40	260	245	35	1 298	3 810
1999/00 ^r	1 727	198	212	40	216	237	39	1 574	4 110
2000/01 ^r	2 117	168	187	56	209	320	25	1 659	4 627
2001/02 ^p	2 397	227	184	100	253	266	18	1 446	4 736

1 The figures shown include an element of 'double counting' where a patient is recorded as having more than one drug type e.g. opioids and cannabinoids.

2 Including caffeine.

3 Disorders due to multiple drug use and use of other psychoactive substances.

r Revised.

p Provisional.

Source : ISD Scotland (SMR01).

A1.4 | General acute admissions for drug misuse ; type of admission : 2001/02^p

NHS board and council area of residence, age group and gender

	Total Admissions	Elective ⁴	Emergency
Scotland	4 736	554	4 182
<i>by NHS board</i>			
Argyll & Clyde	369	39	330
Ayrshire & Arran	569	50	519
Borders	33	1	32
Dumfries & Galloway	101	16	85
Fife	220	33	187
Forth Valley	124	14	110
Grampian	428	59	369
Greater Glasgow	1 729	199	1 530
Highland	39	2	37
Lanarkshire	306	45	261
Lothian	562	72	490
Tayside	107	18	89
Island boards ¹	15	2	13
No fixed abode	115	4	111
Other / not known ²	19	-	19
<i>by council area</i>			
Aberdeen City	336	43	293
Aberdeenshire	78	12	66
Angus	19	5	14
Argyll & Bute	29	3	26
Ayrshire East	208	18	190
Ayrshire North	230	15	215
Ayrshire South	131	17	114
Borders	33	1	32
Clackmannanshire	18	1	17
Dumfries & Galloway	101	16	85
Dunbartonshire East	27	3	24
Dunbartonshire West	102	16	86
Dundee City	65	10	55
Edinburgh City	415	52	363
Falkirk	62	6	56
Fife	220	33	187
Glasgow City	1 552	175	1 377
Highland	39	2	37
Inverclyde	164	16	148
Lanarkshire North	234	36	198
Lanarkshire South	156	19	137
Lothian East	40	8	32
Lothian West	73	10	63
Midlothian	34	2	32
Perth & Kinross	23	3	20
Renfrewshire	103	12	91
Renfrewshire East	29	3	26
Stirling	42	7	35
Other council areas ³	29	6	23
No fixed abode	115	4	111
Other / not known ²	29	-	29
<i>by age group</i>			
0-14	44	2	42
15-19	374	20	354
20-24	897	72	825
25-29	1 157	127	1 030
30-34	1 082	126	956
35+	1 182	207	975
<i>by gender</i>			
Males	3 264	402	2 862
Females	1 472	152	1 320

1 Orkney, Shetland and Western Isles NHS boards.

2 Other includes patients resident outwith Scotland or those where NHS board or council area of residence is not known.

3 Eilean Siar, Moray, Orkney and Shetland councils.

4 Includes deferred, waiting list, repeat admissions and booked cases.

p Provisional.

Source : ISD Scotland (SMR01).

A1.5 | General acute admissions for drug misuse ; speciality : 2001/02^p

NHS board and council area of residence, age group and gender

Health impact

	Total admissions	General Medicine	Cardiology	Communicable Diseases	Respiratory Medicine	General Surgery	General Surgery (excl Vascular)	A & E	Anaesthetics	Orthopaedics	Plastic Surgery	Gynaecology	Other
Scotland	4 736	2 519	40	281	52	426	371	304	58	319	52	31	283
<i>by NHS board</i>													
Argyll & Clyde	369	237	-	-	-	63	3	11	1	34	1	3	16
Ayrshire & Arran	569	263	2	-	-	2	77	112	9	47	3	4	50
Borders	33	27	-	-	-	-	2	-	-	1	-	-	3
Dumfries & Galloway	101	68	-	-	-	17	-	-	-	3	-	2	11
Fife	220	102	2	25	5	-	40	-	4	27	2	1	12
Forth Valley	124	74	3	1	-	16	2	-	1	14	-	1	12
Grampian	428	167	3	45	9	1	24	108	8	9	5	-	49
Greater Glasgow	1 729	905	16	98	14	233	195	31	25	106	23	15	68
Highland	39	15	-	1	-	12	-	1	1	4	-	1	4
Lanarkshire	306	170	7	32	-	42	4	12	1	25	-	1	12
Lothian	562	354	4	64	21	9	13	-	8	38	14	2	35
Tayside	107	41	2	8	2	16	5	19	-	4	1	1	8
Island boards ¹	15	10	-	-	-	2	-	-	-	1	-	-	2
No fixed abode	115	73	1	7	1	10	5	9	-	5	3	-	1
Other / not known ²	19	13	-	-	-	3	1	1	-	1	-	-	-
<i>by council area</i>													
Aberdeen City	336	131	3	39	8	1	15	88	7	5	5	-	34
Aberdeenshire	78	33	-	6	-	-	7	19	-	4	-	-	9
Angus	19	10	1	2	-	2	-	-	-	1	-	-	3
Argyll & Bute	29	18	-	-	-	1	-	-	-	1	-	-	9
Ayrshire East	208	95	1	-	-	-	36	37	3	21	-	1	14
Ayrshire North	230	129	1	-	-	2	32	26	4	16	2	2	16
Ayrshire South	131	39	-	-	-	-	9	49	2	10	1	1	20
Borders	33	27	-	-	-	-	2	-	-	1	-	-	3
Clackmannanshire	18	8	-	-	-	1	-	-	-	7	-	-	2
Dumfries & Galloway	101	68	-	-	-	17	-	-	-	3	-	2	11
Dunbartonshire East	27	12	-	4	-	7	-	-	-	-	-	-	4
Dunbartonshire West	102	62	-	15	1	12	3	-	2	3	-	2	2
Dundee City	65	20	1	6	2	12	1	19	-	1	1	-	2
Edinburgh City	415	250	4	56	17	2	10	-	7	33	8	2	26
Falkirk	62	41	3	1	-	8	-	-	-	1	-	-	8
Fife	220	102	2	25	5	-	40	-	4	27	2	1	12
Glasgow City	1 552	820	16	79	13	200	188	31	23	87	22	13	60
Highland	39	15	-	1	-	12	-	1	1	4	-	1	4
Inverclyde	164	118	-	-	-	38	-	-	-	6	-	-	2
Lanarkshire North	234	121	6	28	-	35	2	11	1	20	-	1	9
Lanarkshire South	156	91	1	3	-	28	6	-	-	17	1	2	7
Lothian East	40	23	-	3	4	-	1	-	-	3	-	-	6
Lothian West	73	54	-	1	-	7	1	-	1	2	5	-	2
Midlothian	34	27	-	4	-	-	1	-	-	-	1	-	1
Perth & Kinross	23	11	-	-	-	2	4	-	-	2	-	1	3
Renfrewshire	103	52	-	-	-	12	3	9	-	22	1	1	3
Renfrewshire East	29	13	-	-	-	5	-	2	1	8	-	-	-
Stirling	42	24	-	-	-	6	2	-	1	6	-	1	2
Other council areas ³	29	13	-	-	1	2	2	1	1	1	-	-	8
No fixed abode	115	73	1	7	1	10	5	9	-	5	3	-	1
Other / not known ²	29	19	-	1	-	4	1	2	-	2	-	-	-
<i>by age group</i>													
0-14	44	20	-	-	-	-	-	5	-	3	-	-	16
15-19	374	226	3	8	1	20	15	56	1	17	-	5	22
20-24	897	504	2	40	6	85	47	78	12	72	7	6	38
25-29	1 157	628	4	65	17	88	121	79	17	62	19	8	49
30-34	1 082	542	13	80	8	126	96	44	9	88	13	8	55
35+	1 182	599	18	88	20	107	92	42	19	77	13	4	103
<i>by gender</i>													
Males	3 264	1 698	34	179	28	285	258	227	42	258	40	-	215
Females	1 472	821	6	102	24	141	113	77	16	61	12	31	68

1 Orkney, Shetland and Western Isles NHS boards.

2 Other includes patients resident outwith Scotland or those where NHS board or council area of residence is not known.

3 Eilean Siar, Moray, Orkney and Shetland councils.

p Provisional.

Source : ISD Scotland (SMR01).

A1.6 General acute admissions for drug misuse ; length of stay : 2001/02^p

NHS board and council area of residence, age group and gender

	Total admissions	less than 1 week	between 1 week and 1 month	between 1 month and 3 months	more than 3 months
Scotland	4 736	4 212	466	52	6
<i>by NHS board</i>					
Argyll & Clyde	369	337	30	1	1
Ayrshire & Arran	569	515	50	3	1
Borders	33	30	2	1	-
Dumfries & Galloway	101	88	13	-	-
Fife	220	200	18	2	-
Forth Valley	124	103	18	3	-
Grampian	428	383	39	5	1
Greater Glasgow	1 729	1 522	185	21	1
Highland	39	37	1	1	-
Lanarkshire	306	277	24	4	1
Lothian	562	494	60	7	1
Tayside	107	90	16	1	-
Island boards ¹	15	12	3	-	-
No fixed abode	115	106	6	3	-
Other / not known ²	19	18	1	-	-
<i>by council area</i>					
Aberdeen City	336	301	32	3	-
Aberdeenshire	78	73	3	2	-
Angus	19	15	4	-	-
Argyll & Bute	29	28	1	-	-
Ayrshire East	208	191	14	2	1
Ayrshire North	230	210	20	-	-
Ayrshire South	131	114	16	1	-
Borders	33	30	2	1	-
Clackmannanshire	18	17	1	-	-
Dumfries & Galloway	101	88	13	-	-
Dunbartonshire East	27	23	4	-	-
Dunbartonshire West	102	92	8	2	-
Dundee City	65	55	9	1	-
Edinburgh City	415	361	46	7	1
Falkirk	62	48	12	2	-
Fife	220	200	18	2	-
Glasgow City	1 552	1 364	169	18	1
Highland	39	37	1	1	-
Inverclyde	164	146	16	1	1
Lanarkshire North	234	210	20	3	1
Lanarkshire South	156	145	9	2	-
Lothian East	40	36	4	-	-
Lothian West	73	63	10	-	-
Midlothian	34	34	-	-	-
Perth & Kinross	23	20	3	-	-
Renfrewshire	103	95	8	-	-
Renfrewshire East	29	25	4	-	-
Stirling	42	36	5	1	-
Other council areas ³	29	21	7	-	1
No fixed abode	115	106	6	3	-
Other / not known ²	29	28	1	-	-
<i>by age group</i>					
0-14	44	44	-	-	-
15-19	374	361	13	-	-
20-24	897	849	42	6	-
25-29	1 157	1 038	107	12	-
30-34	1 082	949	119	14	-
35+	1 182	971	185	20	6
<i>by gender</i>					
Males	3 264	2 915	311	32	6
Females	1 472	1 297	155	20	-

¹ Orkney, Shetland and Western Isles NHS boards.

² Other includes patients resident outwith Scotland or those where NHS board or council area of residence is not known.

³ Eilean Siar, Moray, Orkney and Shetland councils.

^p Provisional.

Source : ISD Scotland (SMR01).

A1.7 | General acute admissions for drug misuse; length of stay : 2001/02^p

drug type

	Total Admissions	Less than 1 week	Between 1 week and 1 month	Between 1 month and 3 months	More than 3 months
Opioids	2 397	2 118	252	24	3
Cannabinoids	227	224	3	-	-
Sedatives/hypnotics	184	149	29	5	1
Cocaine	100	93	7	-	-
Other stimulants ¹	253	243	9	1	-
Hallucinogens	266	239	24	2	1
Volatile solvents	18	18	-	-	-
Multiple/Other ²	1 446	1 275	149	21	1

1 Including caffeine.

2 Disorders due to multiple drug use and use of other psychoactive substances.

p Provisional.

Source : ISD Scotland (SMR01).

Health impact