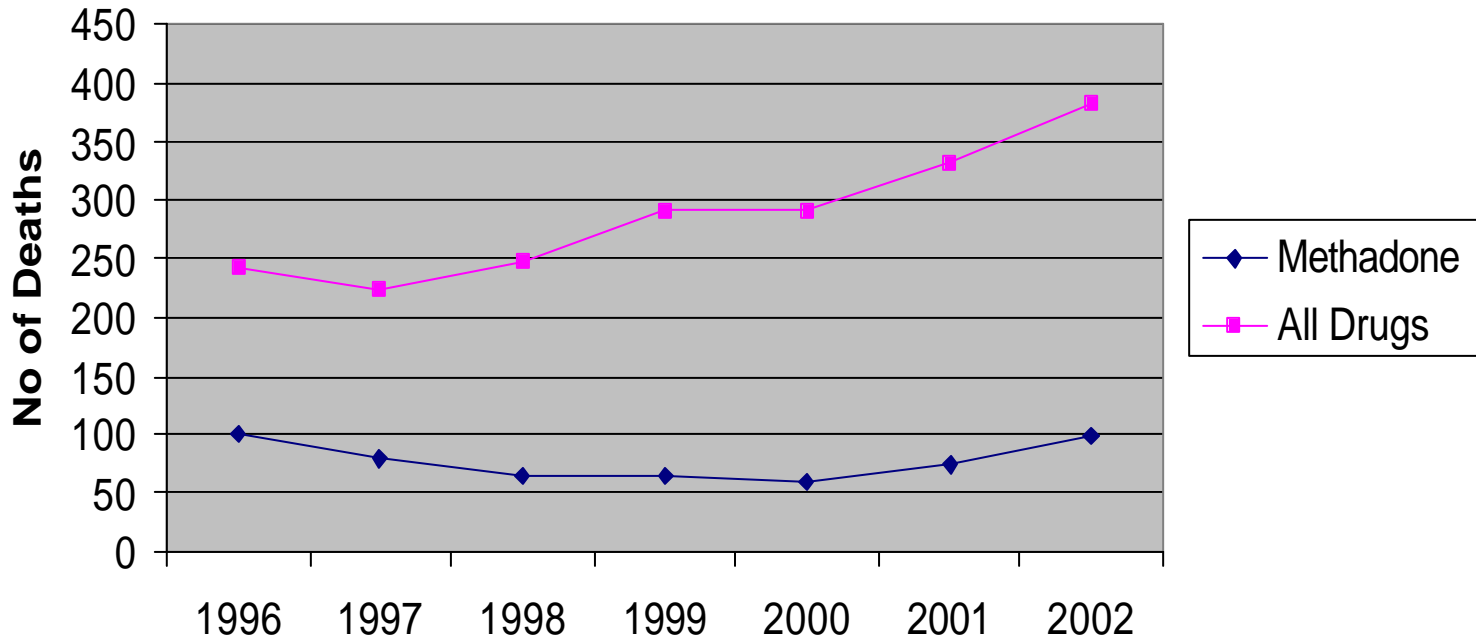




GLASGOW

Methadone & Total Drug-related Deaths 1996 to 2002

Methadone & Total Drug-related Deaths 1996 to 2002



DRUG DEATHS RISK FACTORS

- **Injecting, Male 85%**
- **Cocktails of CNS depressant drugs & alcohol**
- **Single, living and injecting alone, homeless**
- **Loss of tolerance – detoxification - incarceration**
- **Longer term users**
- **Psychiatric co-morbidity**
- **Previous overdose**

Long Waiting Times

Inaccessibility of services

GLASGOW RESPONSE SHORT LIFE WORKING GROUP

- **Interagency collaboration**
- **Looked at each death individually**
- **Drugs involved**
- **Contact with services**
- **Identified common themes**
- **Established a core set of risk factors & predictors**
- **Make recommendations and an action plan by early November**

GLASGOW STATS

- **Total 124**
- **85% male**
- **51% in 26-30 age group**
- **62% were single, 21% lived with partner (n=90)**
- **Single and living alone (n=54) 28% in hostel**
- **23 (18.5%) Homeless**
- **OD witnessed & ambulance called in 93(75%) cases, delay in 35(38%)**

DRUGS IDENTIFIED (n=124)

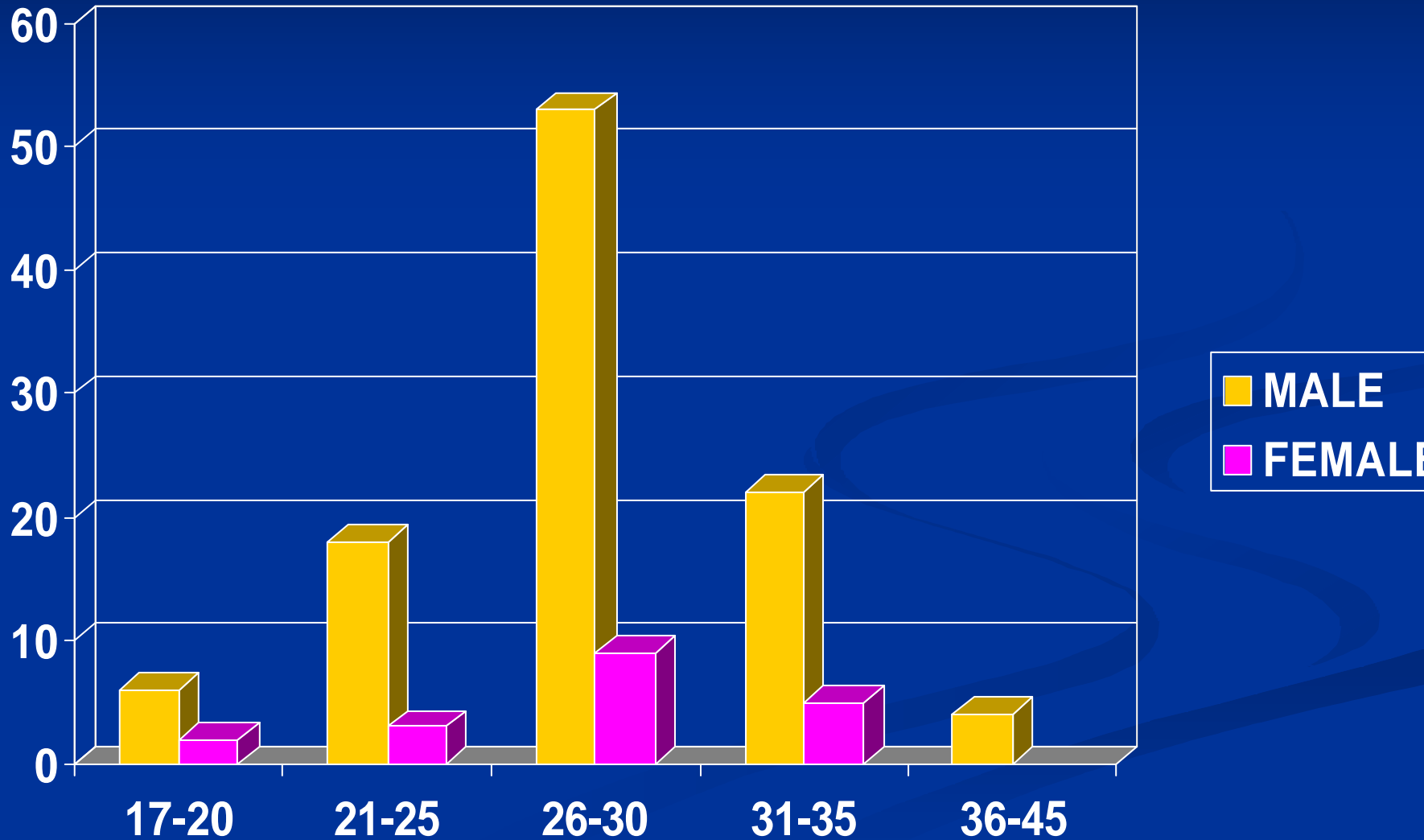
- Heroin 87(70%)
- Benzodiazepines 89(71%)
- Methadone 30(24%)
- Alcohol 66(54%)

BAC>200mg in 11

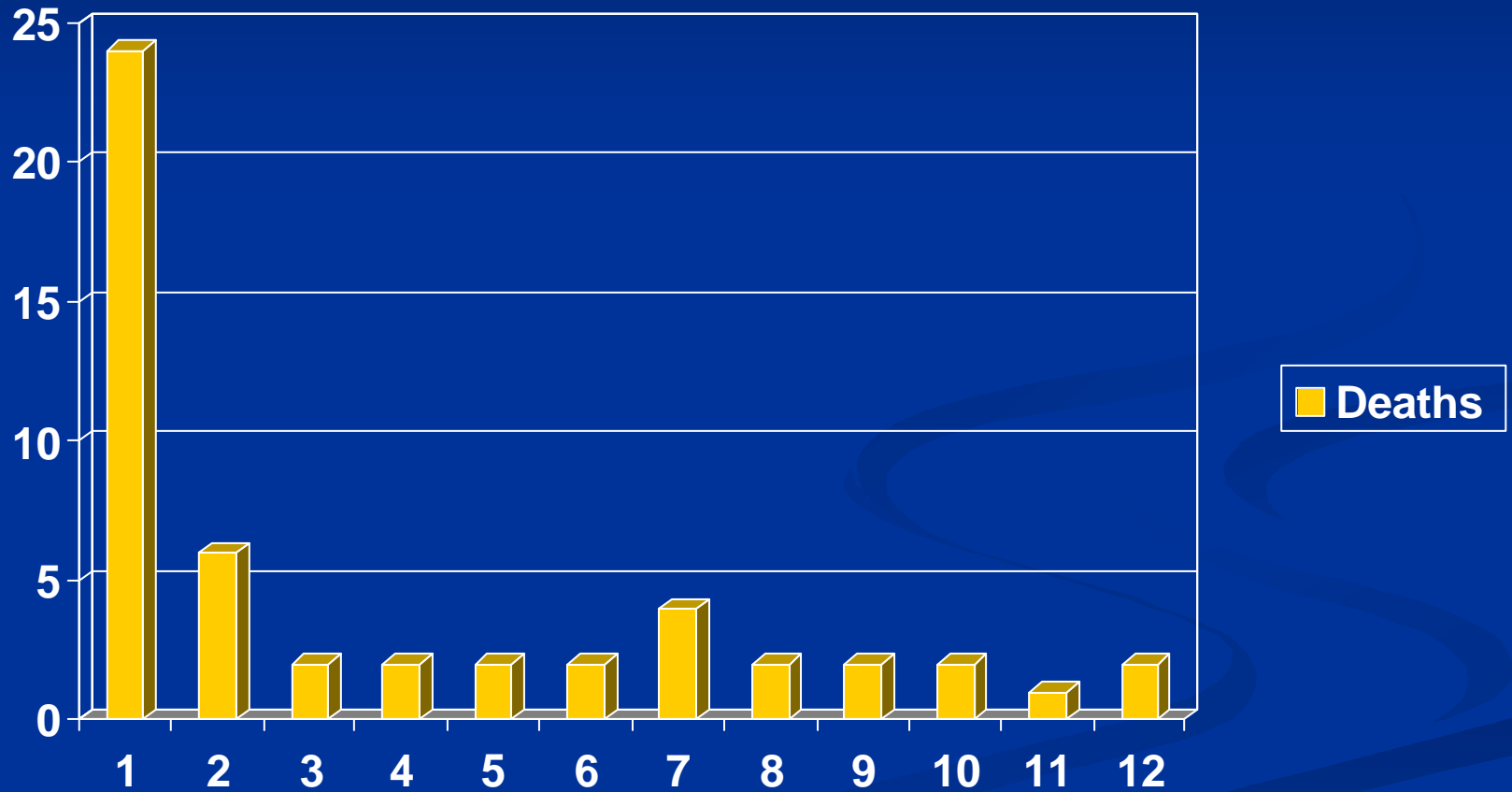
100-200mg in 19

- Cocaine 7(6%)

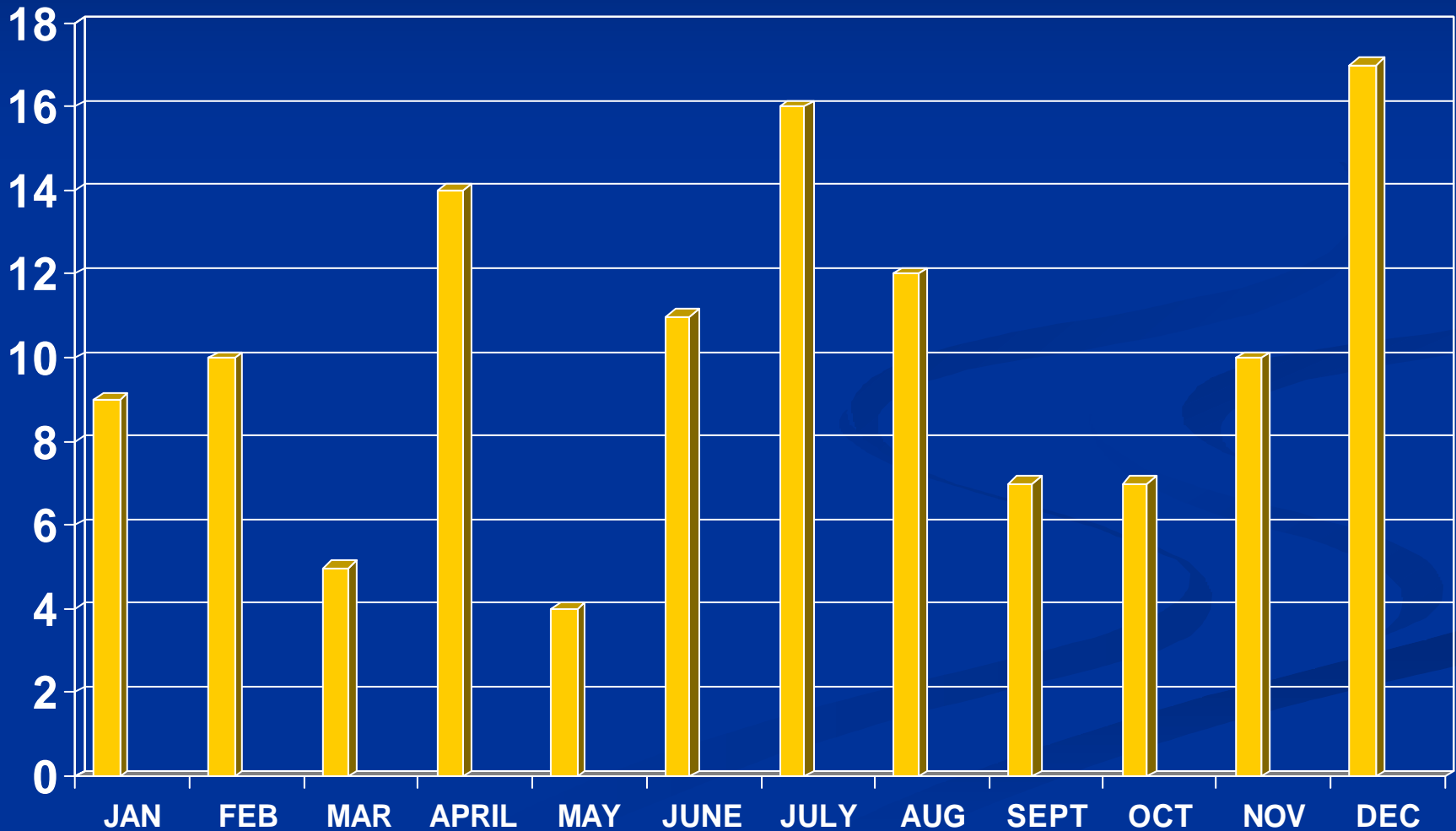
DEATHS by AGE



Number of drug deaths per month after release from prison, 2002



DRUG DEATHS by MONTH



SERVICE CONTACT

- 26 GDPS
- 30 GP shared care
- 77 GCC social work, mainly criminal justice
- 52 mental health services
- 51 Drug Crisis centre
- n=70, 26% attended GP within 4 weeks, 16% 1 week
- A&E – 25 had previous non-fatal OD (limited data)

PRESCRIBING ISSUES

- 30 methadone deaths
- 13 were on a methadone script
- 13 where methadone directly contributed
- Benzodiazepines

GLASGOW RESPONSE

- **Preventing overdose campaign**
- **No waiting times**
- **Community addiction teams**
- **62 clinics for homeless people – non-exclusion**
- **Develop closer liaison with prison staff – process mapping**
- **Drug court and DTTOs**
- **Training for all GPs and GDPS guidelines**
- **Rapid reaction team**
- **Update DAT on methadone deaths**